



Leading the Industry with Modular Solutions

Table Of Contents

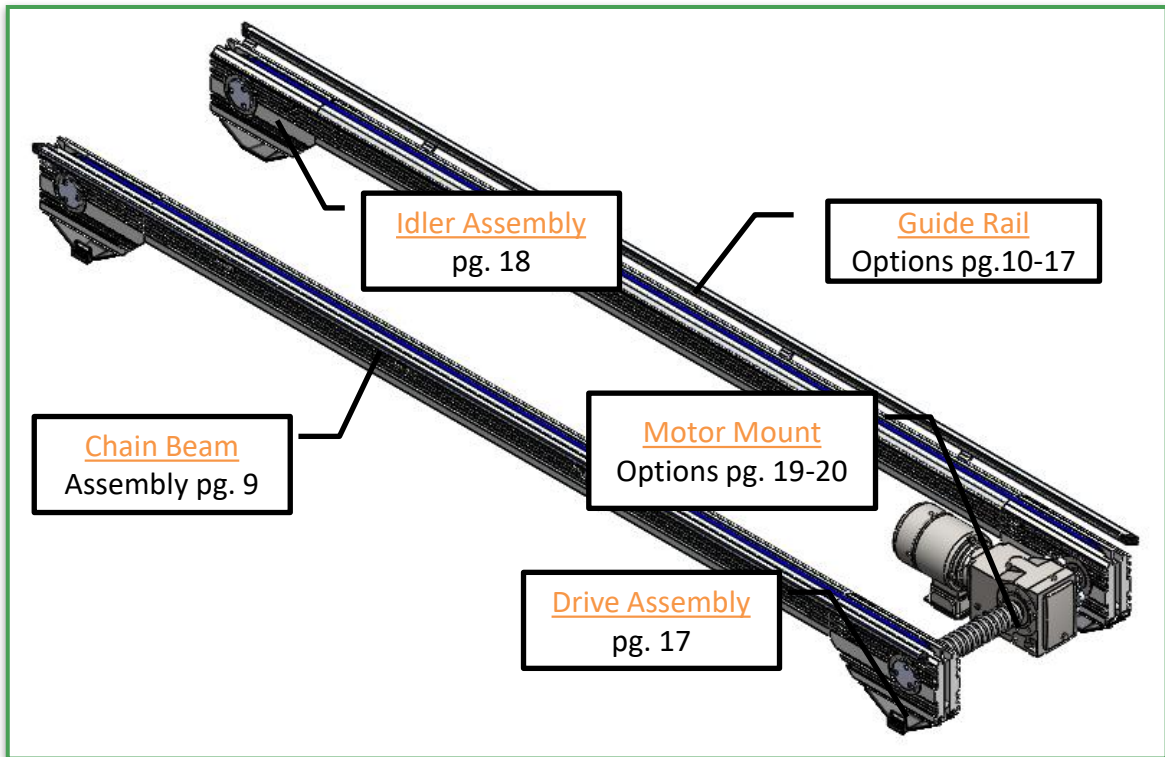
Title Page.....	1
Table Of Contents.....	3
Aluminum vs Steel.....	4
Section 1 Conveyors.....	5
<u>Conveyor Configuration.....</u>	6-8
<u>Chain Beam.....</u>	9
<u>Snap on Guide Rail.....</u>	10,11
<u>Heavy Duty Guide Rail.....</u>	12,13
<u>Outboard Guide Rail.....</u>	14-16
<u>Drive Assembly.....</u>	17
<u>Idler Assembly.....</u>	18
<u>Inboard Motor Mount.....</u>	19
<u>Outboard Motor Mount.....</u>	20
<u>Support Information.....</u>	21
<u>T Slotted Extrusion Information.....</u>	22
<u>Part Table of Contents.....</u>	23-24
<u>Part Information.....</u>	26-60
Section 2 Additional Products and Services.....	
<u>Systems Integration.....</u>	62
<u>Stair Tread and Walkover.....</u>	63
<u>Custom Product Pallets.....</u>	64
<u>Special Machinery.....</u>	65

Aluminum Vs Steel

- There is no welding required!
- Our hard anodized extruded aluminum does not rust or corrode, so no painting is necessary, EVER!
- Extruded aluminum beam profiles are designed to be lightweight while maintaining exceptional high strength characteristics.
- Modu-Tek aluminum beam profiles are T-slotted for ease and speed of assembly.
- Only three simple hand tools (1/2" wrench, 5/32" Allen Wrench, and a Standard Tape Measure) are required to build structural systems.
- Structures built from Modu-Tek aluminum beam can be quickly reconfigured to incorporate design changes.
- Extruded aluminum beams are easily expanded or altered to meet the requirements of any on-going project.
- Additional components and accessories are simple to add at any time.

WHY TEKNO?

- Tekno has the most competitive pricing in the industry. When the overall cost of completing a project from start to finish are evaluated, Tekno is the true leader in the price war.
- Tekno's components do not require drilling, tapping, or counter boring; saving time, expense, and labor.
- Tekno offers a wide variety of hardware to meet every design requirement.
- Tekno's extruded aluminum profiles are T-6 grade...the strongest in the industry!
- Because our Modu-Tek components were designed with the assembly process in mind, absolutely no other product is faster or easier to assemble. ...but we don't want you to simply take our word for it... We want you to let us prove it.



Tekno's 2060 Conveyor assembly is ideal for many conveyance applications. The 2060 Conveyor utilizes a "Double-Plus" Chain that accelerates the pallet 2.5 times the speed of the chain. The conveyor and chain can be used in conjunction with our stoppers to provide non-synchronous movement. This is ideal for workflows that have varying amounts of work content. 2060 Conveyors are utilized in many assembly applications, material handling and more.

Conveyor Part Numbers

C01-0000-XX-000001-XX-X

2060 Conveyor part Category

Conveyor Width (pg. 7)

(Ex 26.25" = 2625)

Minimum = 12.00"

(1200)

Maximum = 48.00"

(4800)

Guide rail Type

A = [B0700111](#) (in) (pg.11)

B = [B0700111](#) (out) (pg.11)

C = [B0700711](#) (in) (pg.11)

D = [B0700711](#) (out) (pg.11)

E = [B0700321](#) (pg.11)

F = [B0700421](#) & 1x1 (W/UHMW)

(pg.13)

G = [B0700421](#) & 1x2 (W/UHMW)

(pg.13)

H = [B0700421](#) & 1x3 (W/UHMW)

(pg.13)

J = [B0700421](#) & 1X1 (NO UHMW)

(pg.13)

K = [B0700421](#) & 1X2 (NO UHMW)

(pg.13)

L = [B0700421](#) & 1X3 (NO UHMW)

(pg.13)

M = [B0700621](#) & 1X1 (w/UHMW)

(pg.16)

N = [B0700621](#) & 1X2 (w/UHMW)

(pg.16)

P = [B0700621](#) & 1X2 (w/UHMW)

(pg.16)

Q = [B0700621](#) & 1X1 (No UHMW)

(pg.16)

R = [B0700621](#) & 1X2 (No UHMW)

(pg.16)

S = [B0700621](#) & 1X3 (No UHMW)

(pg.16)

Supports (pg. 21)

0 = No Supports

1 = [Single Level](#)

Supports

2 = [Dual Level](#)

(Conveyor on

lower)

Motor Orientation (pg.51)

1 = Horizontal (M1)

2 = Vertical (M2)

3 = Motor Up (M4)

Motor Horsepower (pg. 8):

See Page XX – [Motor](#)

[Selection chart](#)

Conveyor Length (pg. 7)

(EX: 120.00" = 12000

Minimum Length = 36.00" (03600)

Maximum Length = 630.00"

(63000)

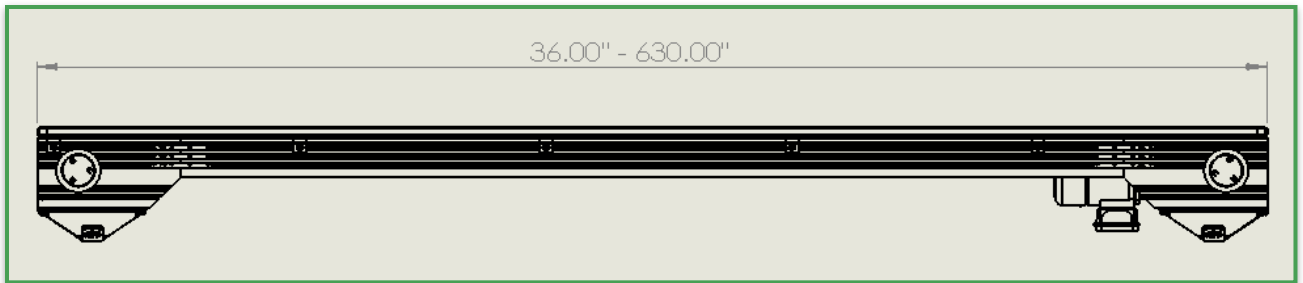
Motor Mount

A = [Inboard](#) (pg.19)

B = [Outboard](#) (pg. 20)

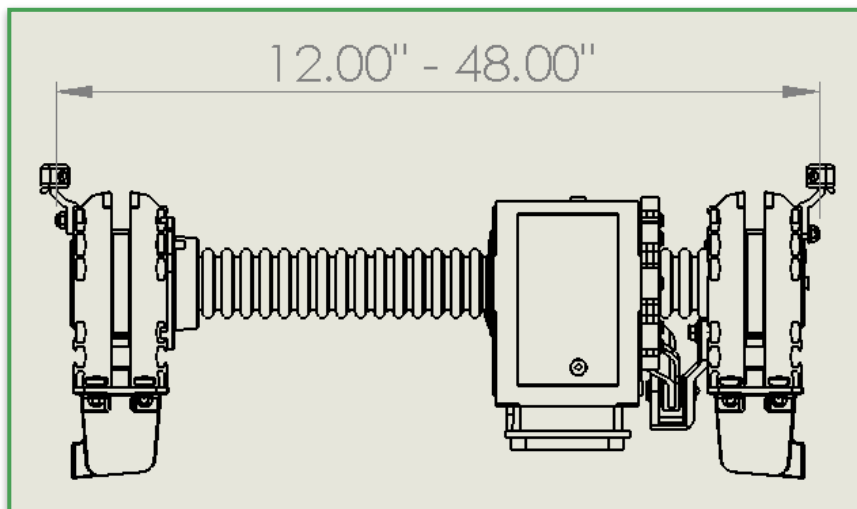
Conveyor Length

36.00" - 650.00"



Conveyor Width

12.00" - 48.00"



Motor Selection Chart

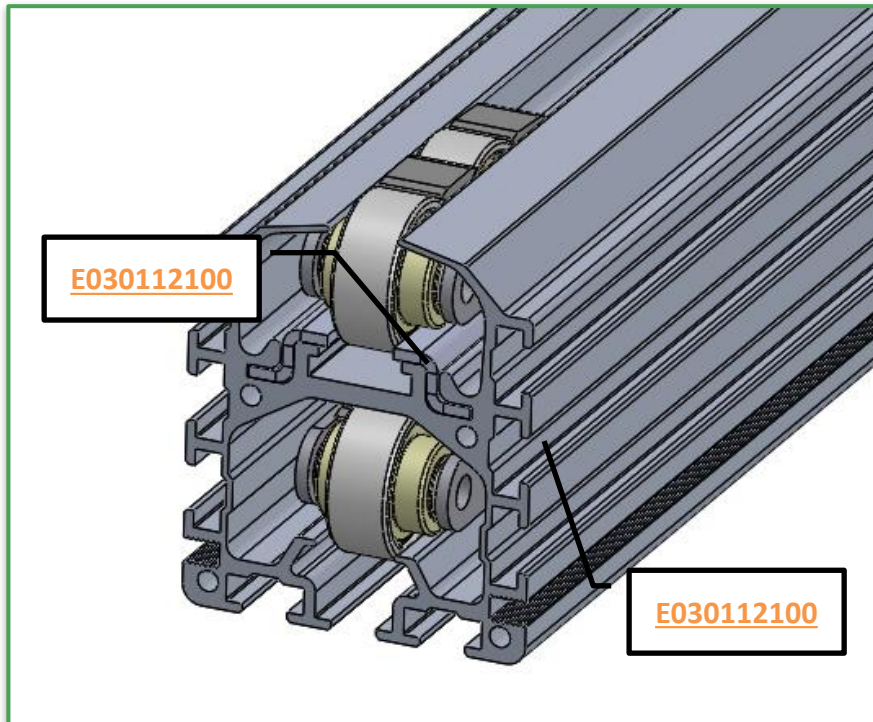
Total Weight Including Product and Pallets on a Conveyor Section

Speed	0 - 500 lbs.	500 - 1000 lbs	1000 - 1500 lbs	1500 - 2000 lbs	2000 - 2500 lbs	2500 - 3000 lbs	3000 - 3500 lbs	3500 - 4000 lbs.
10 - 20 fpm	0.16	0.16	0.16	0.16	0.16	0.25	0.25	0.33
20 - 30 fpm	0.50	0.50	0.50	0.50	0.50	0.50	0.50	0.50
30 - 40 fpm	0.50	0.50	0.50	0.50	0.50	0.75	0.75	0.75
40 - 50 fpm	1.00	1.00	1.00	1.00	1.00	1.00	1.00	1.00
50 - 60 fpm	1.00	1.00	1.00	1.00	1.00	1.00		
60 - 70 fpm	1.00	1.00	1.00	1.00	1.00			
70 - 80 fpm	1.50	1.50	1.50	1.50	1.50	1.50	1.50	
80 - 90 fpm	2.00	2.00	2.00	2.00	2.00	2.00	2.00	2.00

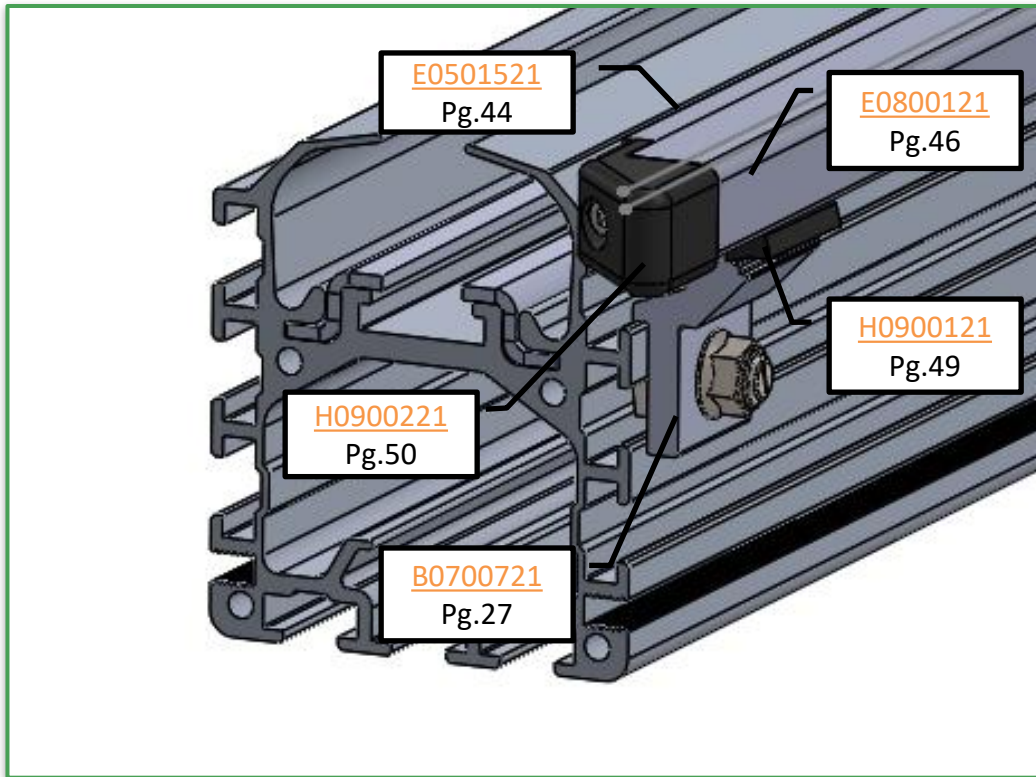
Select the Speed and Weight in the chart above, match the color to the motor below

Motor Identifier	Horse power	Ratio	Motor model #
A	0.16	439.46:1 Ratio	SK9017.1AZ-63SP/4
B	0.25	367.33:1 Ratio	SK9017.1AZ-63LP/4
C	0.33	367.33:1 Ratio	SK9017.1AZ-71SP/4
D	0.5	234.64:1 Ratio	SK9016.1AZ-71LP/4
E	0.5	149.81:1 Ratio	SK9016.1AZ-71LP/4
F	0.75	149.81:1 Ratio	SK9016.1AZ-80SP/4
G	1.00	116.52:1 Ratio	SK9016.1AZ-80LP/4
H	1.00	91.77:1 Ratio	SK9016.1AZ-80LP/4
J	1.50	81.38:1 Ratio	SK9016.1A-90SP/4
K	2.00	71.88:1 Ratio	SK9016.1AZ-90LP/4

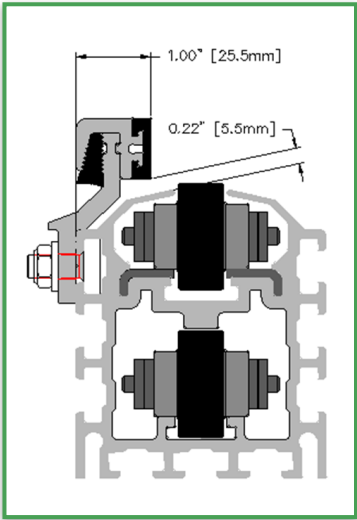
If you don't find the selection you're looking for please contact Tekno



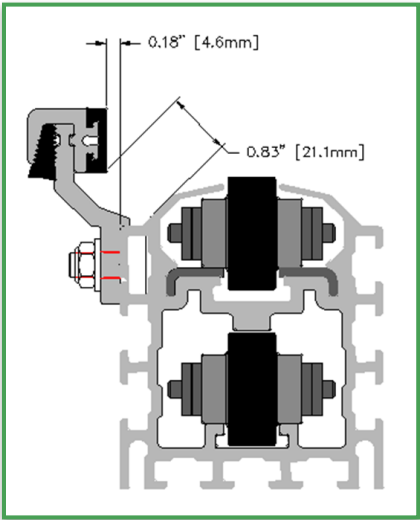
Teknos 2060 Conveyor Extrusion is used in many assembly line applications most commonly in a dual strand configuration. The chain rides on two steel wear strips on the upper level and returns inside the extrusion on the lower level.



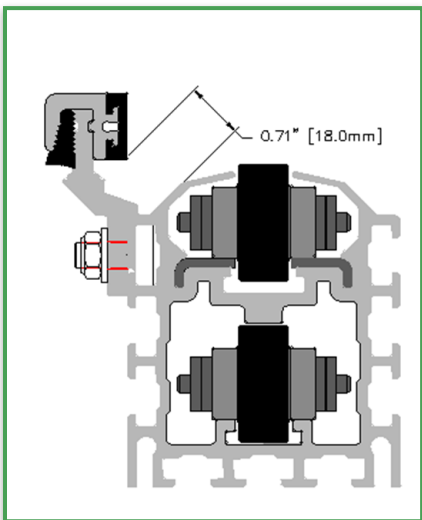
Tekno's conveyor guide rail is designed to quickly mount to the conveyor side frame. We provide a variety of brackets that can be utilized to get different clearances. Each bracket has different gaps to allow smaller or larger debris to pass. See next page for bracket options.



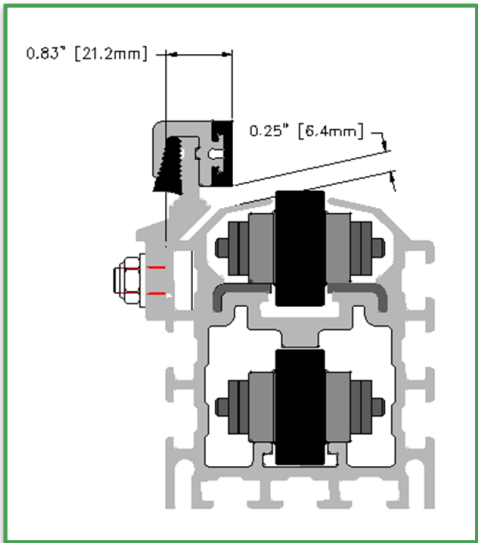
B0700111
(Bracket In)



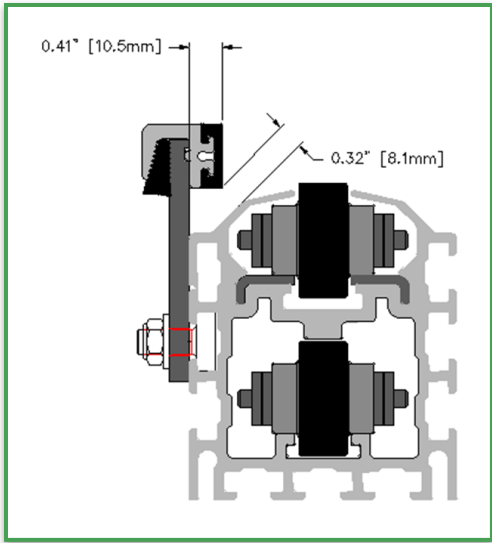
B0700111
(Bracket Out)



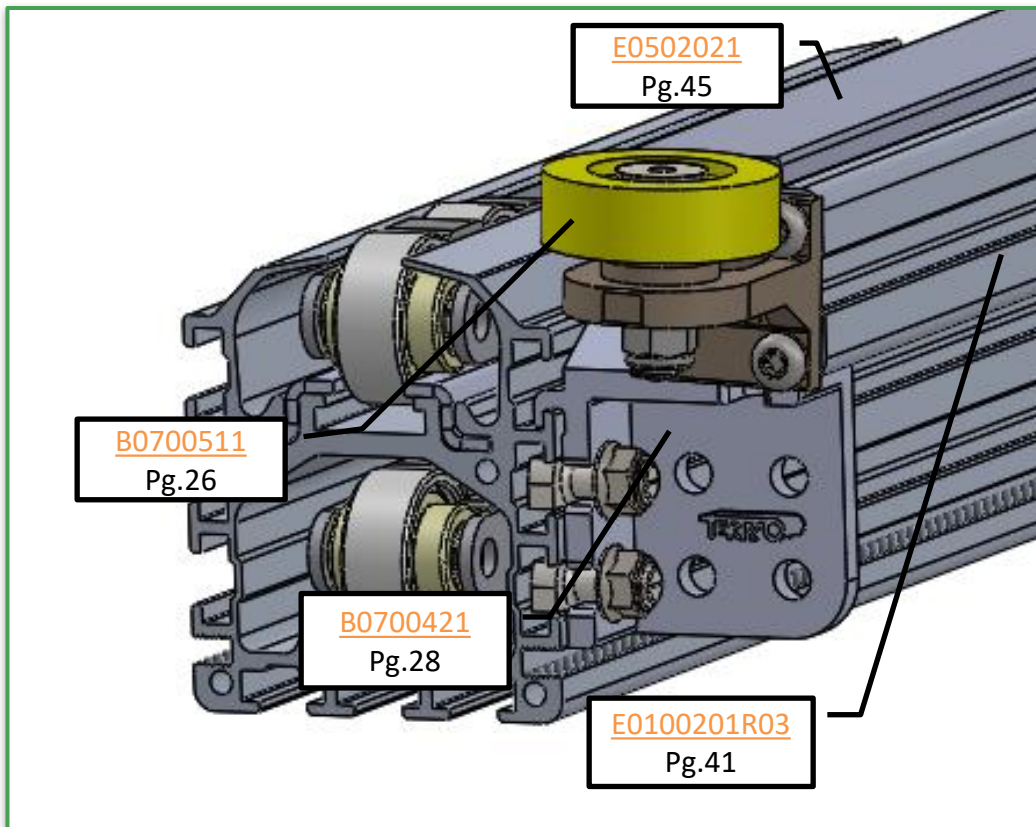
B0700711
(Bracket Out)



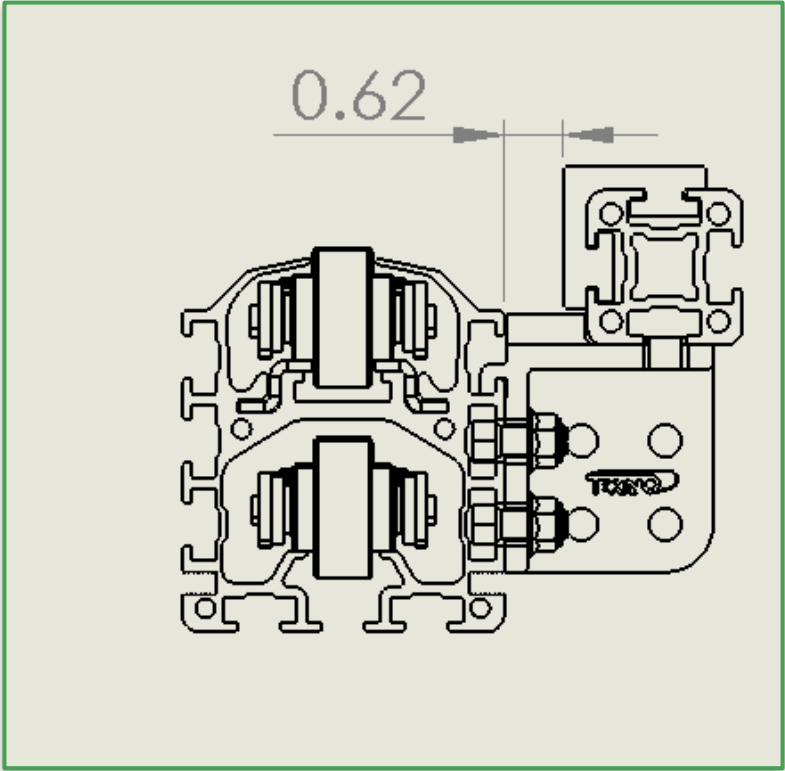
B0700711
(Bracket In)



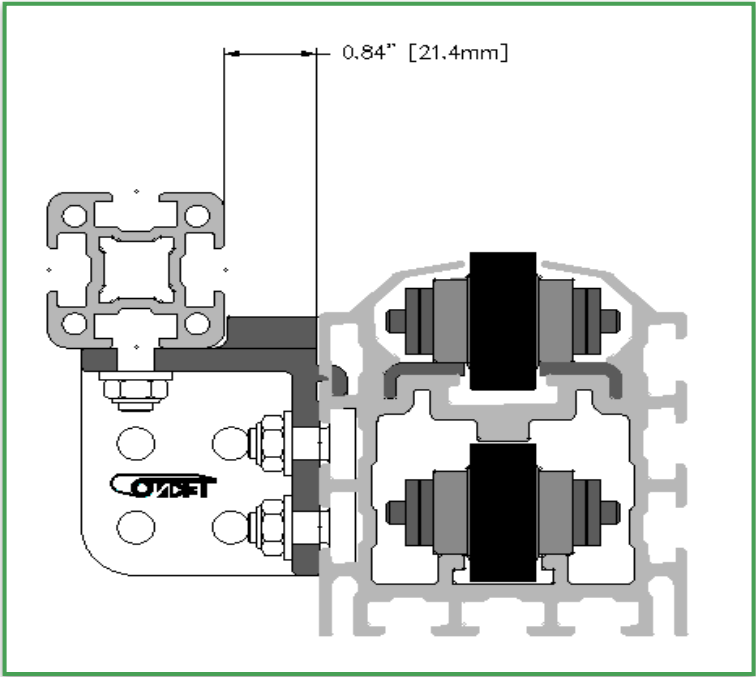
B0700321

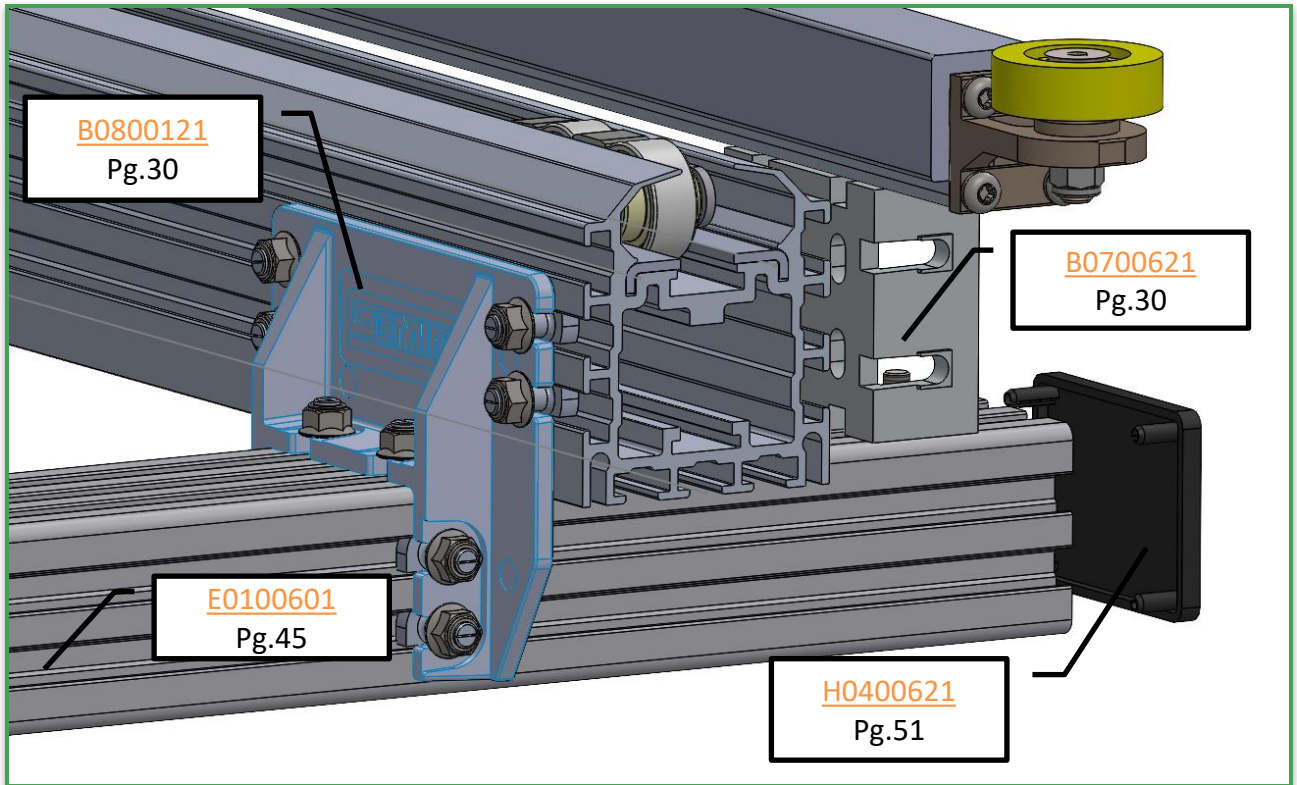


Tekno also offers a “heavy duty” guide rail option for larger pallets or more robust applications. The heavy-duty guide rail utilizes our 1x1 extrusion as the guide surface. We also offer a UHMW cover that can be used to provide a low friction guide surface against your pallets.



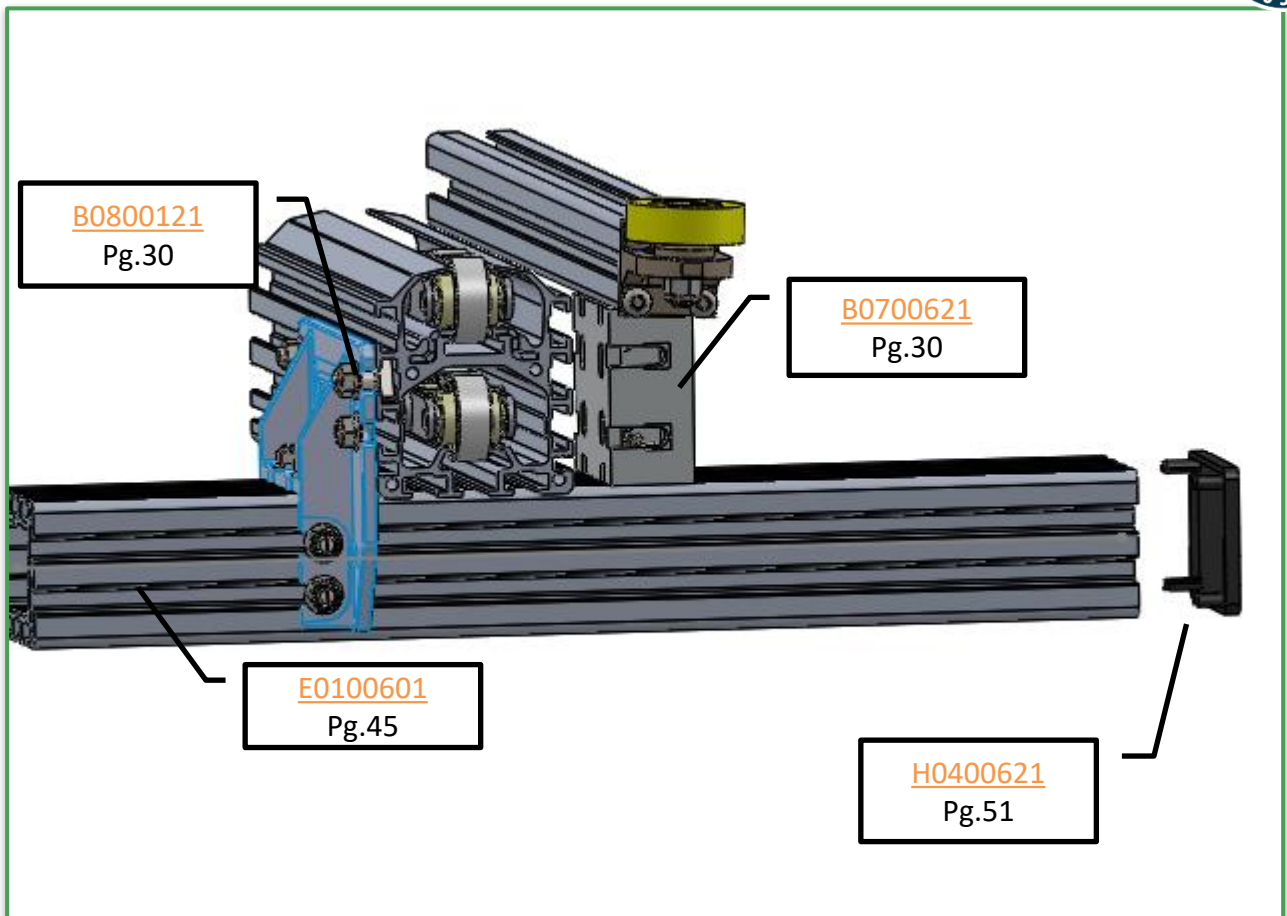
B0700421





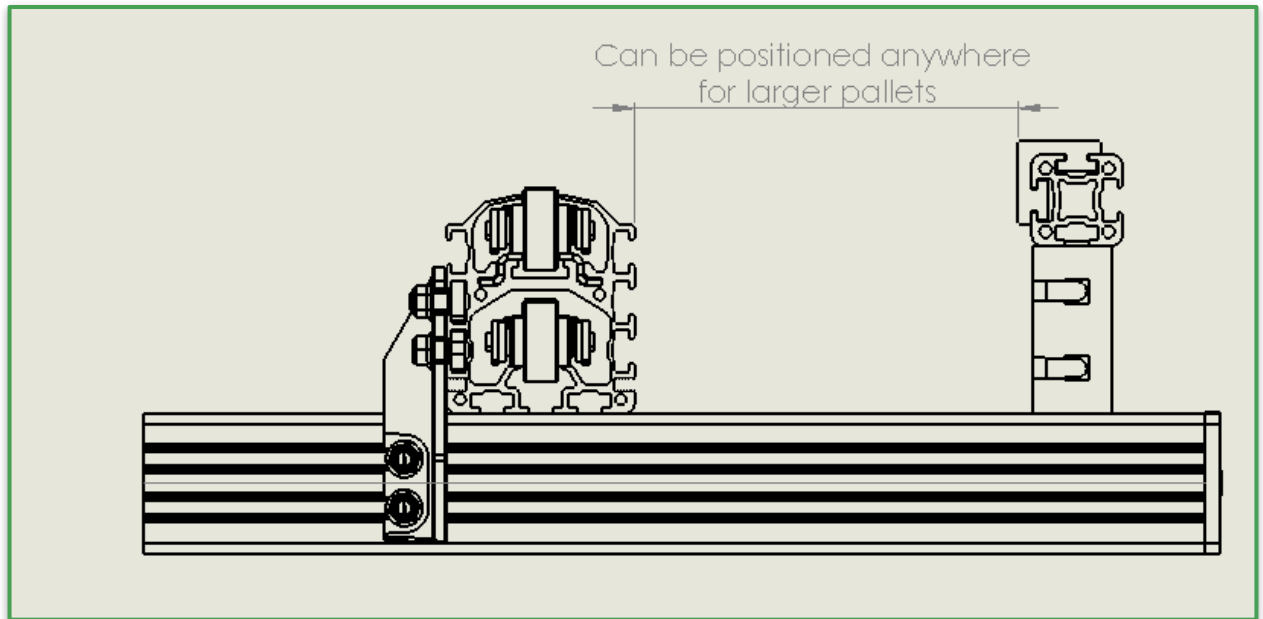
B0700621

Tekno offers outboard guide rail for wider pallets or different shaped products. The outboard guide rail bracket mounts on a crossbeam and can be adjusted the width needed for your product. The guide can be any of our 1x1, 1x2, or 1x3 extrusions. Our UHMW corner extrusion can be added to provide a low friction running surface for your pallets.



B0700621

Tekno offers outboard guide rail for wider pallets or different shaped products. The outboard guide rail bracket mounts on a crossbeam and can be adjusted the width needed for your product. The guide can be any of our 1x1, 1x2, or 1x3 extrusions. Our UHMW corner extrusion can be added to provide a low friction running surface for your pallets.



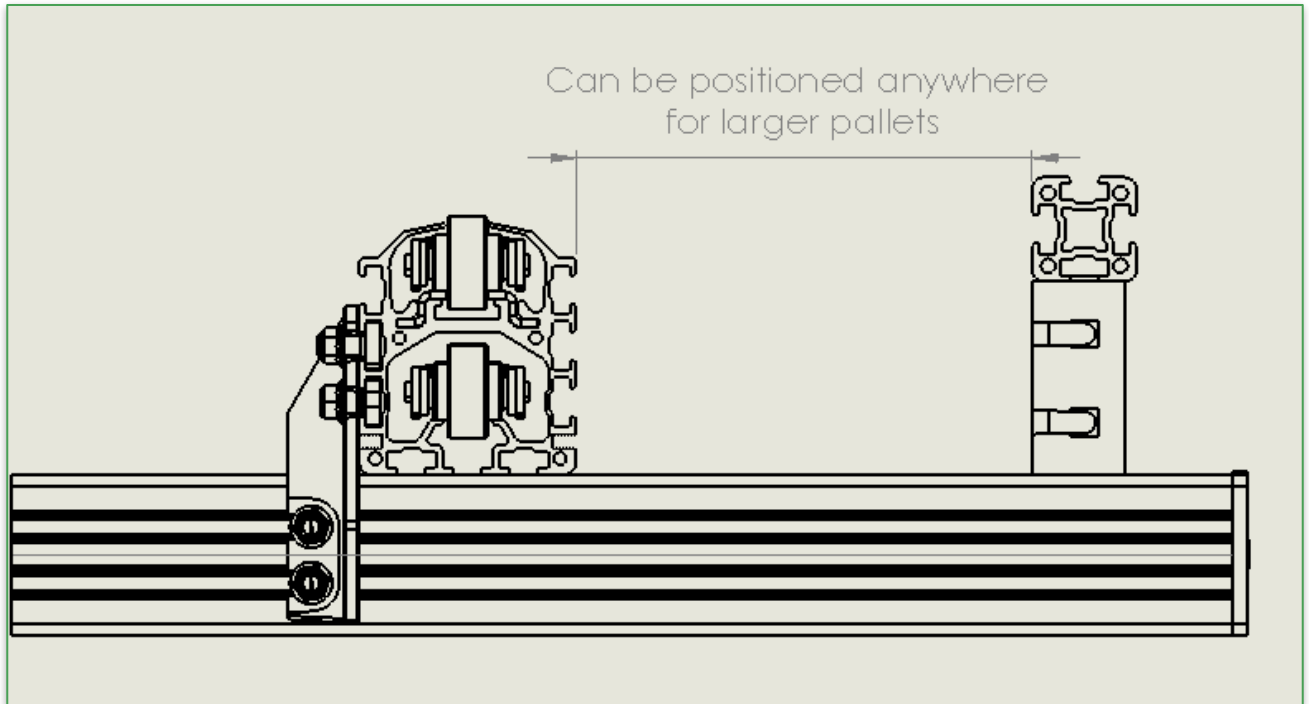
B0700621

Tekno offers outboard guiderail for wider pallets or different shaped products.

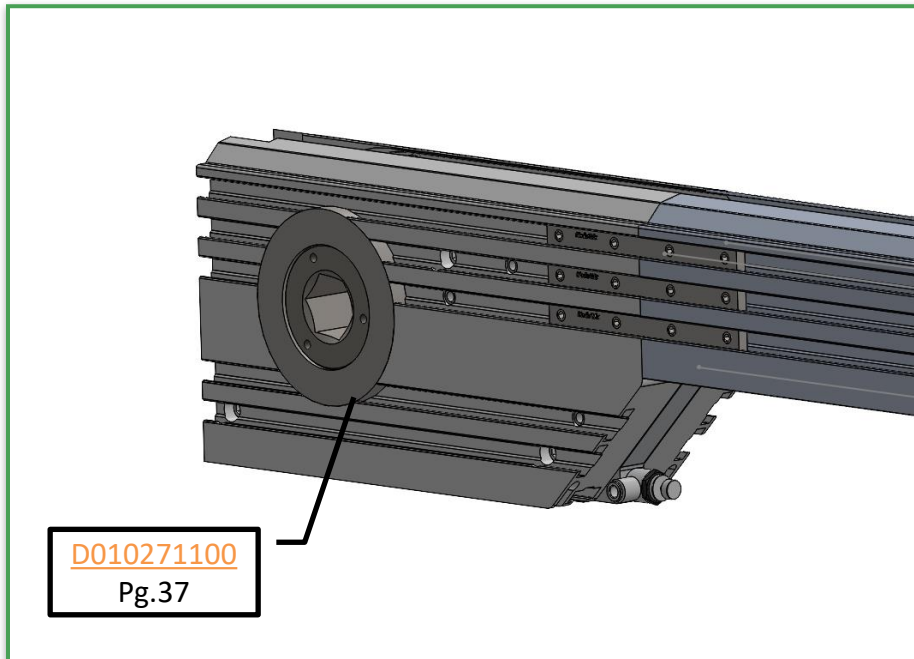
The outboard guiderail bracket mounts on a crossbeam and can be adjusted the width needed for your product.

The guide on top can be any of our 1x1, 1x2, or 1x3 extrusion.

We also offer a UHMW cover that can be used to provide a low friction guide surface against your pallets

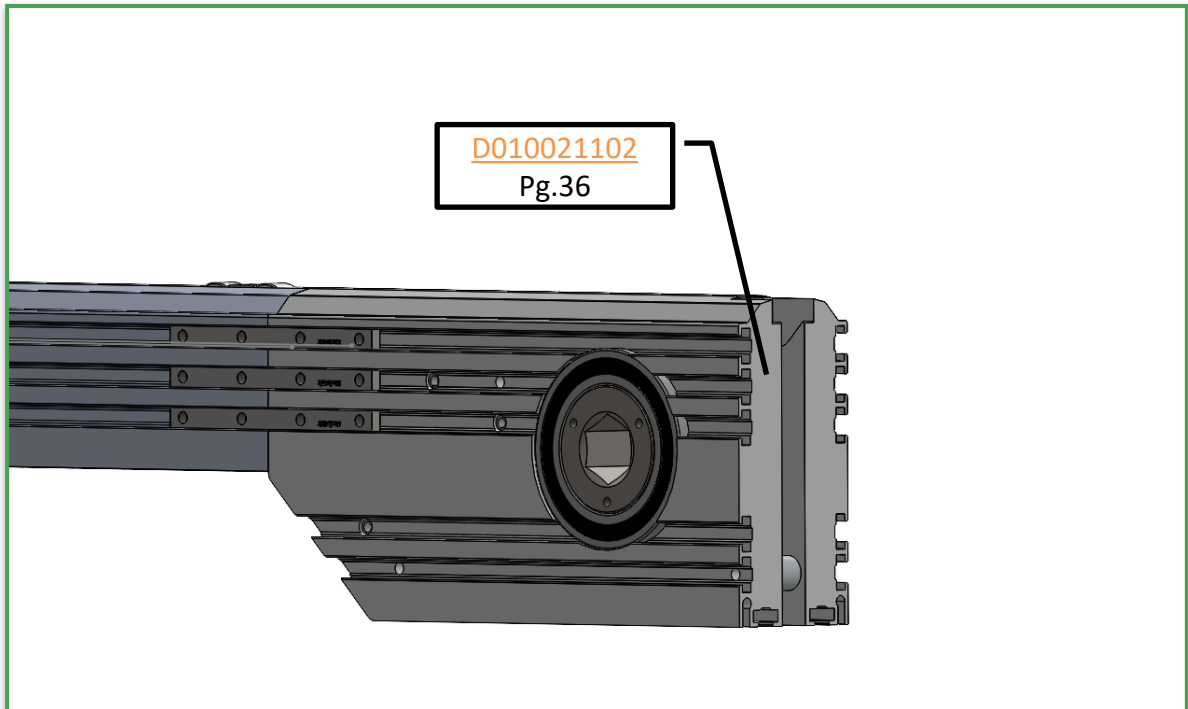
**B0700621**

Tekno offers outboard guiderail for wider pallets or different shaped products. The outboard guiderail bracket mounts on a crossbeam and can be adjusted to the width needed for your product. The guide on top can be any of our 1x1, 1x2, or 1x3 extrusion.



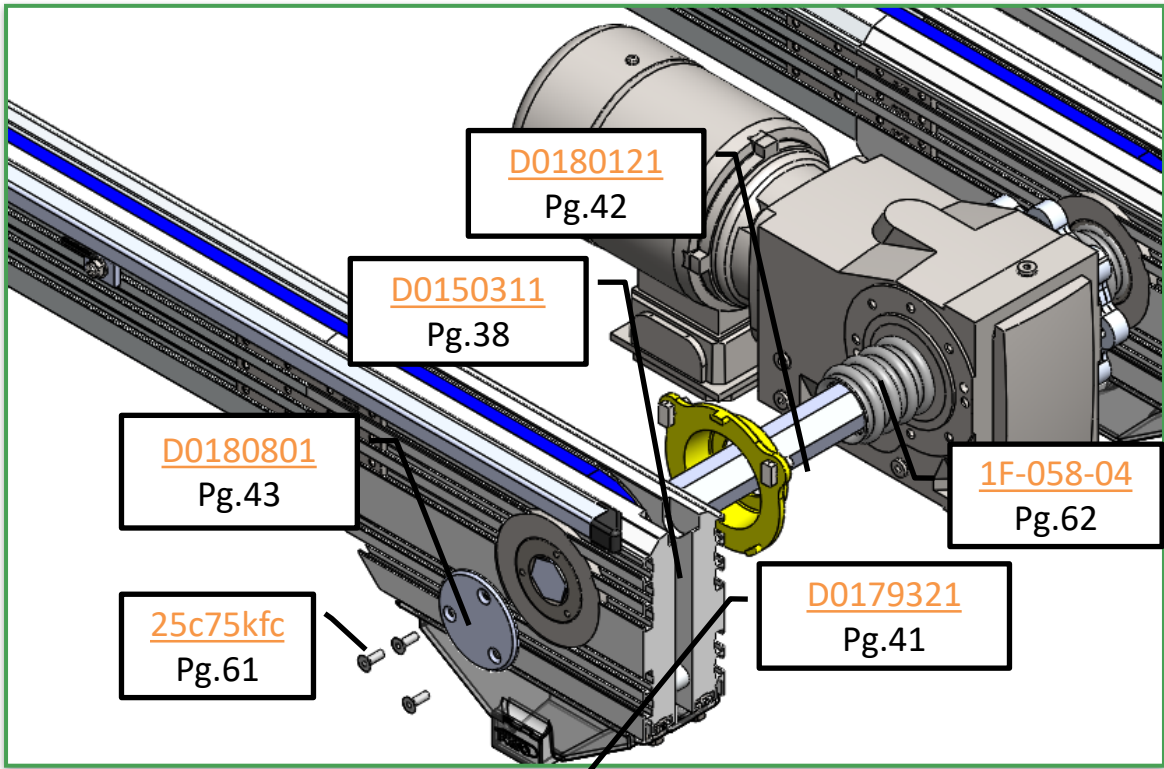
D010271100 - 2060 End drive unit

Tekno's 2060 conveyor end drive unit is used to carry the chain from the upper rail and guides it to the return conveyor beam section. Drives are sold as pairs, so each pair of drives is suitable for a conveyor section. The drive is equipped with a blower that is directed at the chain as it returns. This blows on the chain as it passes and dislodges any loose debris and containments. The drive contains a section that strips the chain from the sprocket as it goes around the sprocket. This stripper ensure that the chain is returned correctly each time regardless of the amount of slack in the chain. This allows Tekno's 2060 conveyors to operate without a tensioner or other devices to maintain the chain slack. All of our drives are equipped with a 1 5/16" hex bore through the sprocket. This allows the drive shaft to be assembled and drive the conveyor chain.

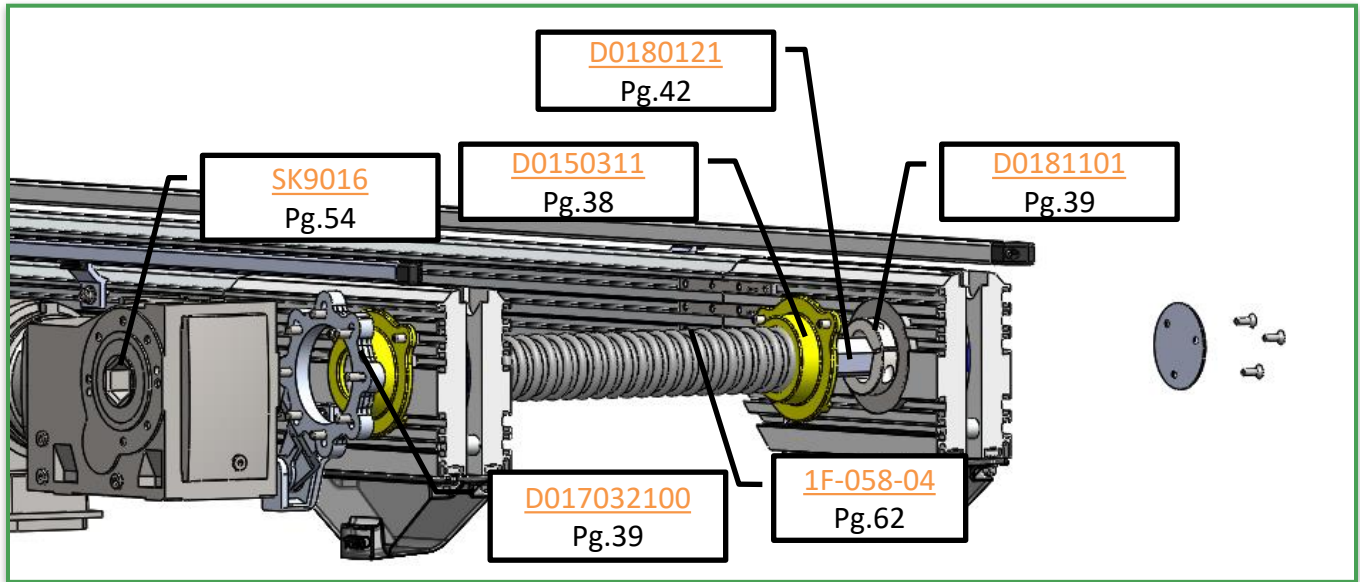


D010021102-Idler Assembly

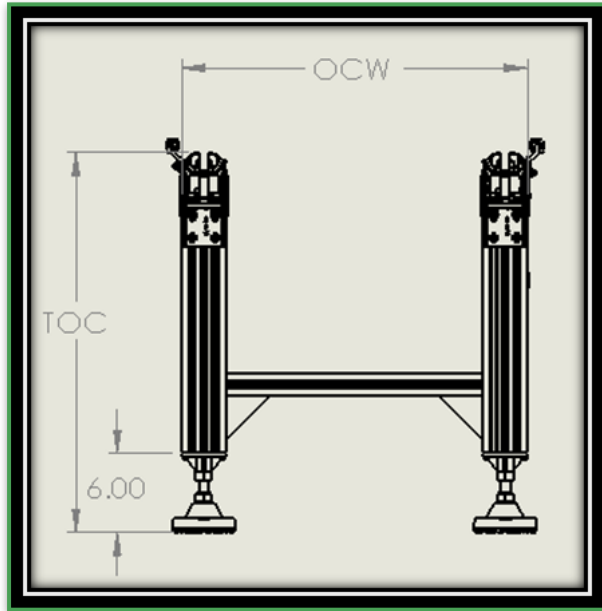
2060 Conveyor idler beam around the sprocket and up to the upper channel. The idlers are sold as pairs so returns the chain from the lower one pair of idlers are suitable for one conveyor.



One of the commonly used motor configurations is mounting the gearmotor between the conveyor rails. This is highly beneficial in assembly line applications where you don't want the motor to interfere with the operators work zone, or other times where the gearmotor would get in the way of equipment, building columns, etc. This configuration the drive shaft is capped on either end with our sprocket bore caps to prevent it from coming out. Tekno utilizes a Hexagon shaped drive shaft on our conveyors. These drive shafts give the ability to produce superior torque while not requiring the precision and alignment of a typical keyed drive shaft. This makes removing the motor quick and efficient.



Another commonly used gearmotor configuration is mounting the motor on the outside of the conveyor chains. This is beneficial as it allows one to quickly remove the gearmotor for replacement or service. In this configuration the shaft is capped on the opposite side as the motor. We utilize a hex shaft clamp in the inside to prevent the shaft from walking while running. The hex shaft is also utilized in this configuration providing superior torque and low precision.

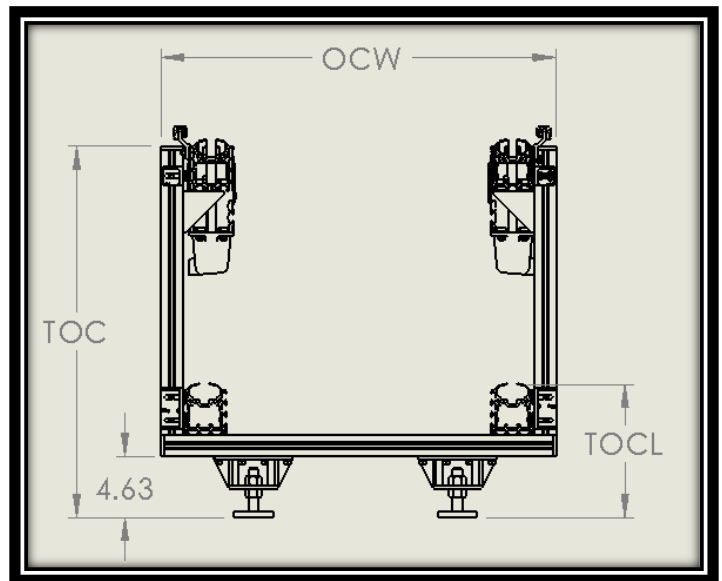


Single Level Support

Single level conveyors (shown left) are ideal for applications where conveyor height is critical. They can go as low as 14 inches and the standard configuration as high as 48 inches. They are best used for conveyor loops or racetracks. The lower cross member can be used to run wiring, air piping, or other utilities.

Over Under Supports

Over under conveyors maximize floor space by allowing you to build on the upper conveyor and return your pallet or fixture on the lower conveyor. The lower conveyor is positioned at 9.5 inches and the upper conveyor can go up to 48 inches. The supports on the sides have been engineered to be smaller profile to allow the operators to get as close to the line as possible.





T-Slotted Extrusions

Material:

6063-T6 Aluminum Alloy

Surface Finish:

201 R1 Clear Anodize, 150 RMS with an application depth of 0.001 in - 0.002 in [0.025 mm - 0.051 mm]

Yield Strength:

25,000 lbs/in² [1,758 kg/cm²]

Tensile Strength:

30,000 lbs/in² [2,109 kg/cm²]

Elongation:

Maximum of 12% in 2.0 in [50.8 mm] of length

Modulus of Elasticity:

10 million lbs/in² [703,100 kg/cm²]

Brinell Hardness

(500 Kg. Load, 10mm Ball):
Approximately 73 HB

Straightness:

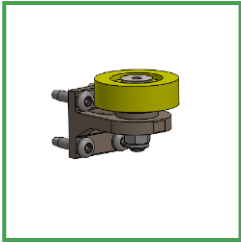
0.0125 in/ft [0.1042 cm/m²], not to exceed 0.25 in [0.64 cm] over a 20 ft [6 m] length.

Twist:

1/4° per foot, not to exceed 3° over a 20-foot length.

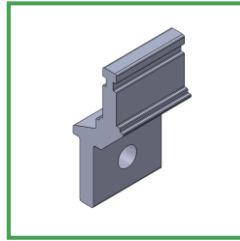
Outboard Guide Rail Roller Assembly

B0700511
pg.27



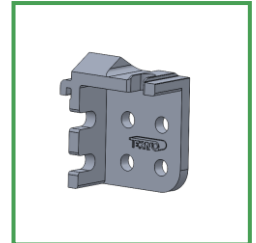
Snap On Guide Rail Bracket

B0700721
pg.28



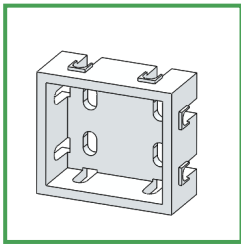
Heavy Duty Guide Rail Bracket

B0700421
pg.29



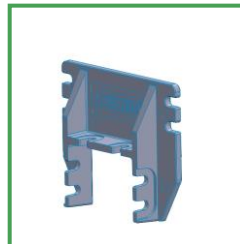
Outboard Guide Rail Bracket

B0700621
pg.30



Cross Support Saddle Bracket

B0800121
pg.31



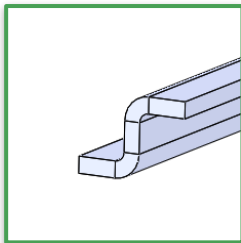
2060 Conveyor Chain

C0190811
pg.32



2060 Hybrid wear strip

C019652100
pg.33



Single Level Support Assembly

C9900111
pg.34



Cross-Brace Assembly

C9900311
pg.35



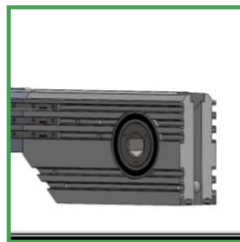
Over Under Support Assembly

C9900511
pg.36



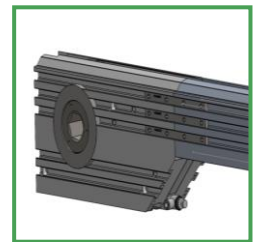
2060 Idler Assembly

D010021102
pg.37



2060 Drive Assembly with Hex Bore and Blower

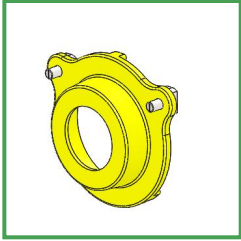
D010271100
pg.38



Inner Drive Shaft Guard

D0150311

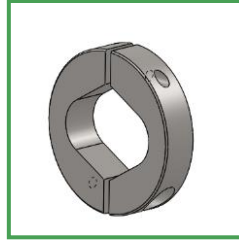
pg.39



1 5/16 in Shaft Clamp

D0181101

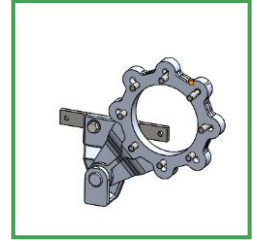
pg.40



Nord Torque Arm Assembly

D0170321

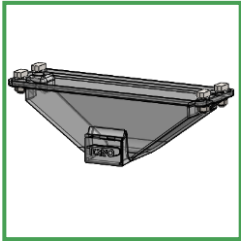
pg.41



3 in Catenary Guard Assembly

D017932100

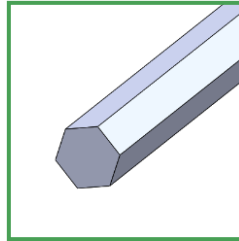
pg.42



1 5/16 in Hex Shaft

D0180121

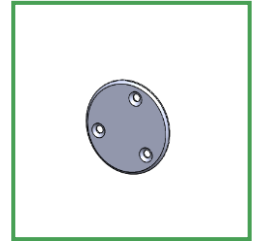
pg.43



Sprocket Bore Cap

D0180801

pg.44



1x1 Extrusion

E0100201R03

Pg.45



2x3 Slot Extrusion

E0100601

pg.46



2060 Conveyor Extrusion

E0300921

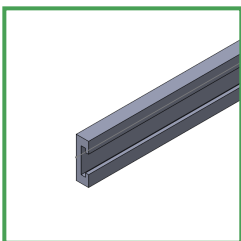
pg.47



Snap on Guide Rail Cover

E0501521

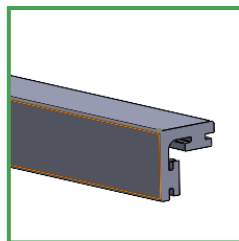
pg.48



Corner UHMW Extrusion

E0502021

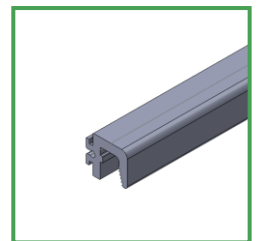
pg.49



Snap on Guide Rail Extrusion

E0800121

pg.50



¾" T-Bolt Assembly

H0100111

pg.51



2X3 End Cap

H0400621

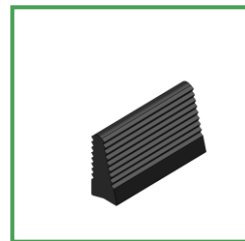
pg.52



Snap On Guide Rail Clamp

H0900121

pg.53



Snap on Guide Rail Lead-In

H0900221

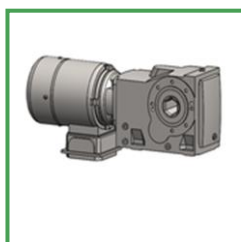
pg.54



Nord Gear Motor Assembly

SK9016

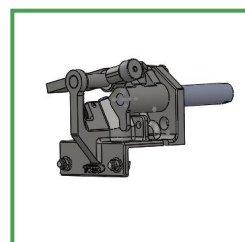
pg.55



Queue Paddle Stop Assembly

S010121100

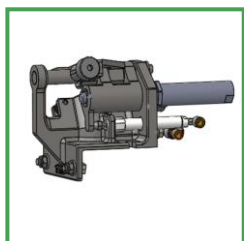
pg.56



Locating Paddle Stop Assembly

S010131100

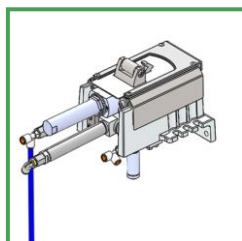
pg.57



Gen 2 Lock Down Stop, 3 Cylinder

S100151101

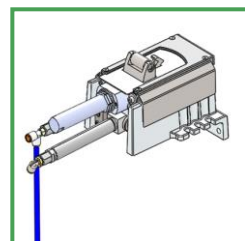
pg.58



Gen 2 Lock Down Stop, 2 Cylinder

S100161101

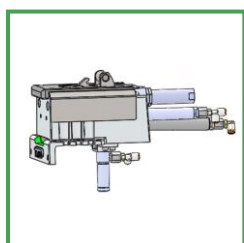
pg.59



Gen 2 Lock Down Stop, 3 Cylinder, Low Load

S100171101

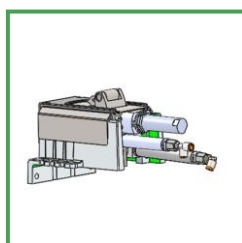
pg.60



Gen 2 lock down stop, 2 Cylinder, Low load

S100181101

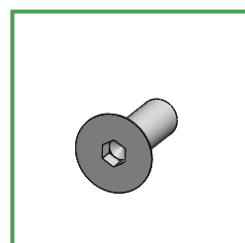
pg.61



¼ in – 20 x ¾ Flathead Cap Screw

25c75kfc

pg.62



Drive Shaft Guard

1F-058-04
pg.63



#8 x 1.00" lg. Self Tapping Screw

8SQ100SS2
pg.64



B0700511

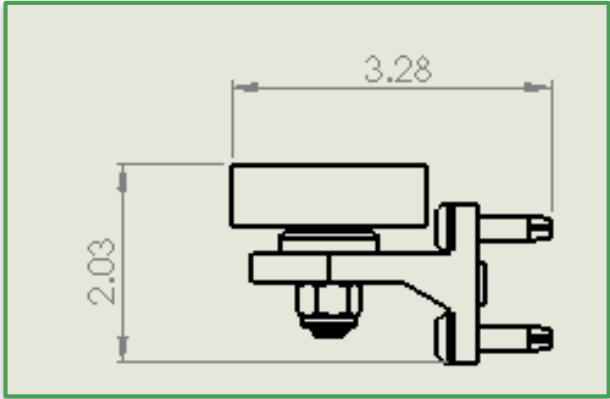
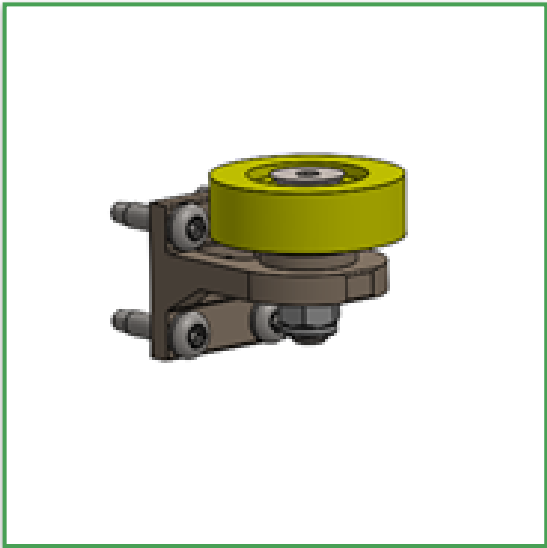
Outboard Guide Rail Roller Assembly

Typical Uses:

- End cap for outboard guide rail
- Provides a roller for transitions

Features:

- Urethane covered precision bearing.



ITEM NO.	PART NUMBER	DESCRIPTION	QTY
1	B070052100	1 X 1 END BRACKET	1
2	H0301921	HARDWARE, ROLLER, URETHANE COVERED	1
3	37C175KFC	FLAT SOC CAP SCREW, 3/8-16 X 1 3/4	1
4	25C100PTFZ	SCREW, PAN HEAD, TORX, THREAD CUTTING, 1/4-20 X 1	4
5	37CNNE	NYLON INSERT LOCKNUT, 3/8-16 UNC	1

B0700711

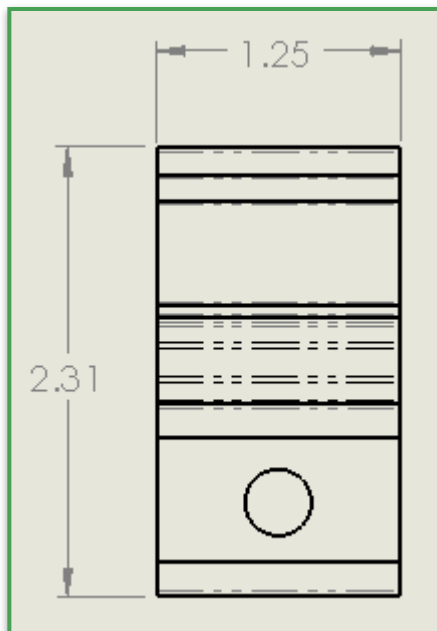
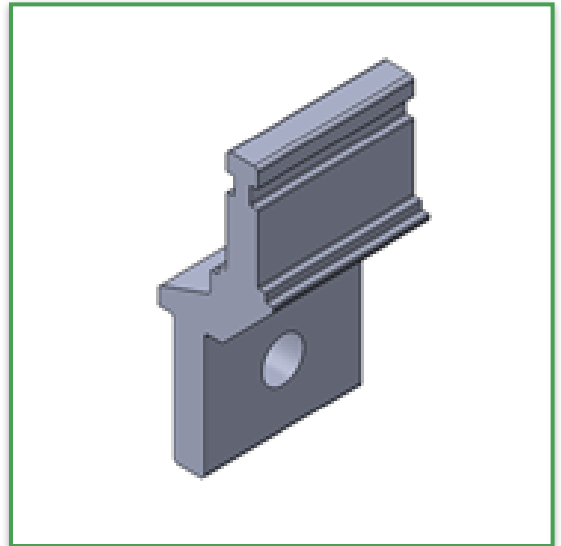
Snap On Guide Rail Bracket

Typical Uses:

- Mount for snap on guide rail

Features:

- By directional mount for different conveyor widths



B0700421

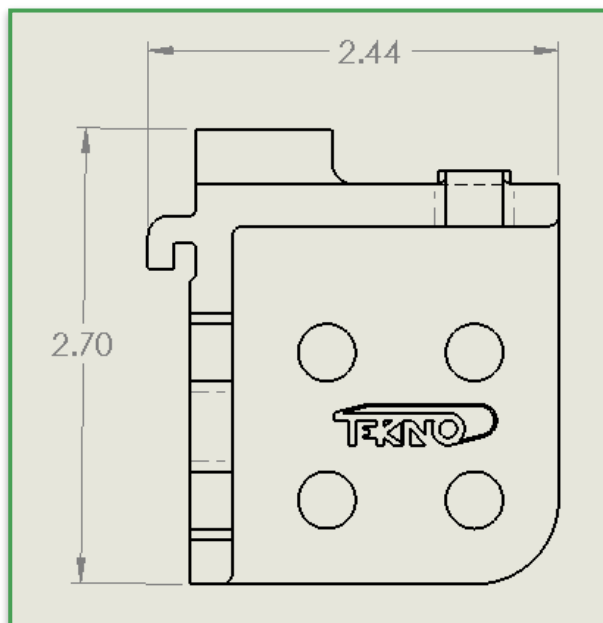
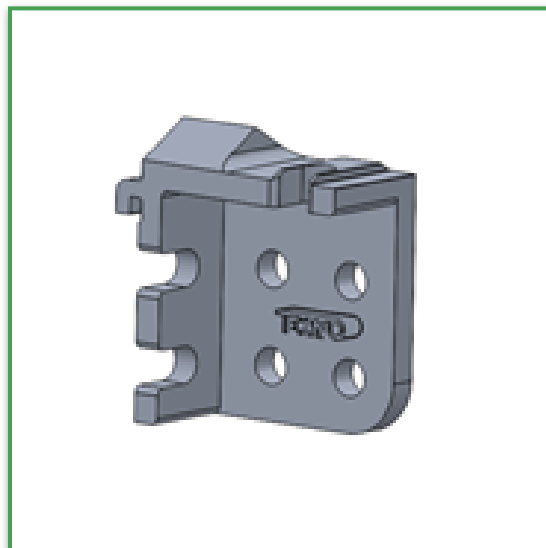
Heavy Duty Guide Rail Bracket

Typical Uses:

- Guide rail bracket for heavy duty guide rail.

Features:

- Alignment keys to ensure guide rail mounts straight.
- Angled surface to shed screws and debris.



B0700621

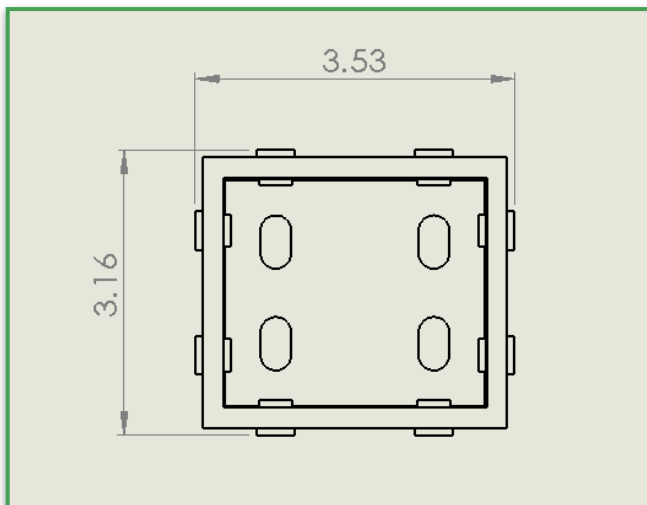
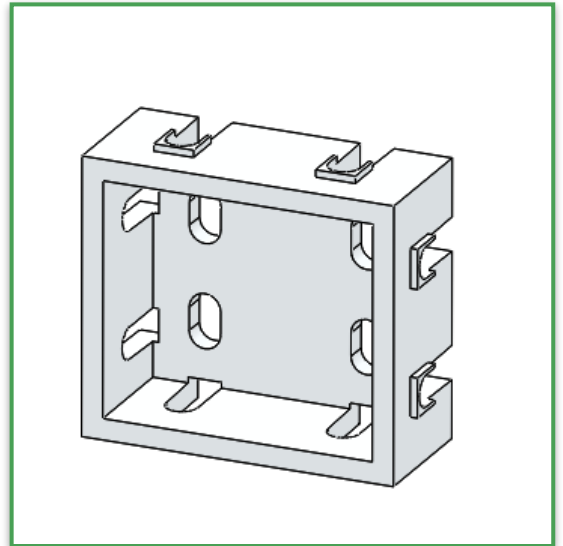
Outboard Guide Rail Bracket

Typical Uses:

- Support bracket for outboard guide rail

Features:

- Alignment keys to ensure square

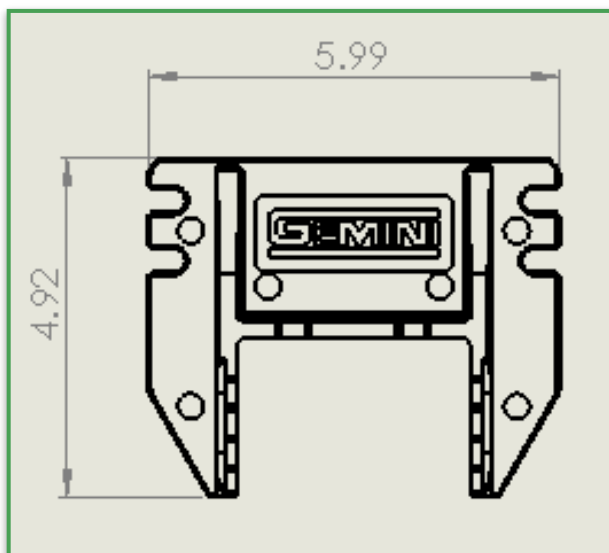
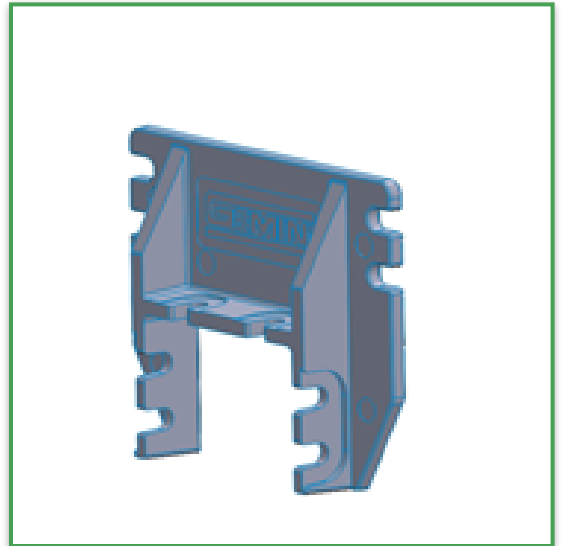


B0800121**Cross Support Saddle Bracket****Typical Uses:**

- Stop cross beams

Features:

- Alignment keys





C0190811

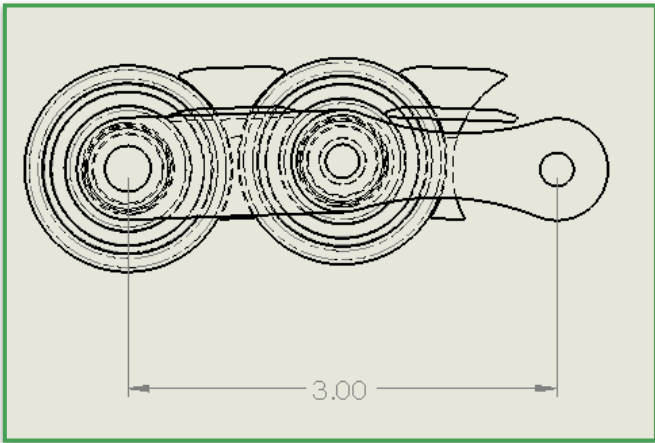
2060 Conveyor Chain

Typical Uses:

- Accumulating chain for assembly lines , pallet handling, and other applications

Features:

- Product moves 2.5x chain speed.
- Built in chain clip to prevent foreign objects from entering chain



ITEM NO.	PART NUMBER	DESCRIPTION	QTY.
1	C0190121R02-003	2060 ROLLER	2
2	C0190121R02-004	2060 DOUBLE PLUS ROLLER	4
3	C0190121R02-002	MIDDLE CHAIN LINK	2
4	C0190121R02-001	PIN LINK PLATE	2
5	C0190121R02-005	BUSHING	1
6	C0190121R02-006n	PIN	2
7	C019020102-007		2



C019652100

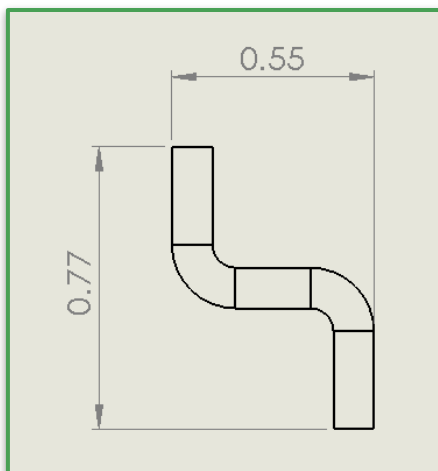
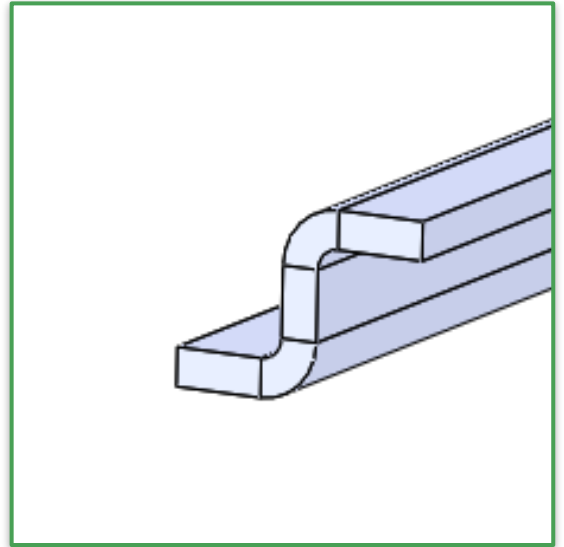
2060 Hybrid wear strip

Typical Uses:

- Wear surface for 2060 conveyor chain

Features:

- Stock 8ft lengths





C9900111

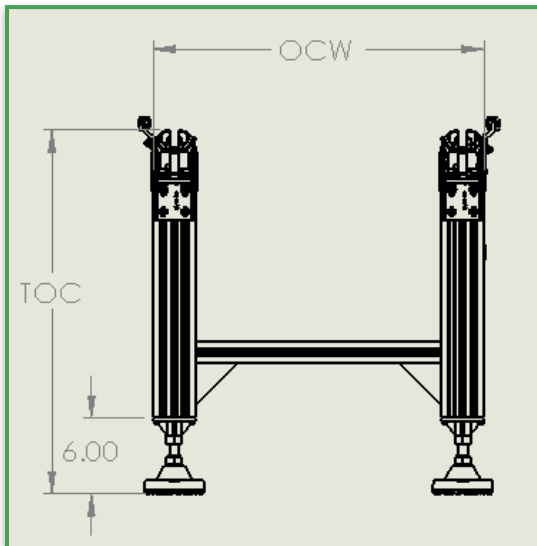
Single Level Support Assembly

Typical Uses:

- Conveyor support structure for loop style conveyor systems

Features:

- Adjustable leveling feet
- T-slotted extrusions for adjustable cross braces.



OCW = Outside Conveyor Width

Minimum = 12"

Maximum = 48"

TOC = Top of Chain

Minimum = 14"

Maximum = 48"

*please specify when ordering



C9900311

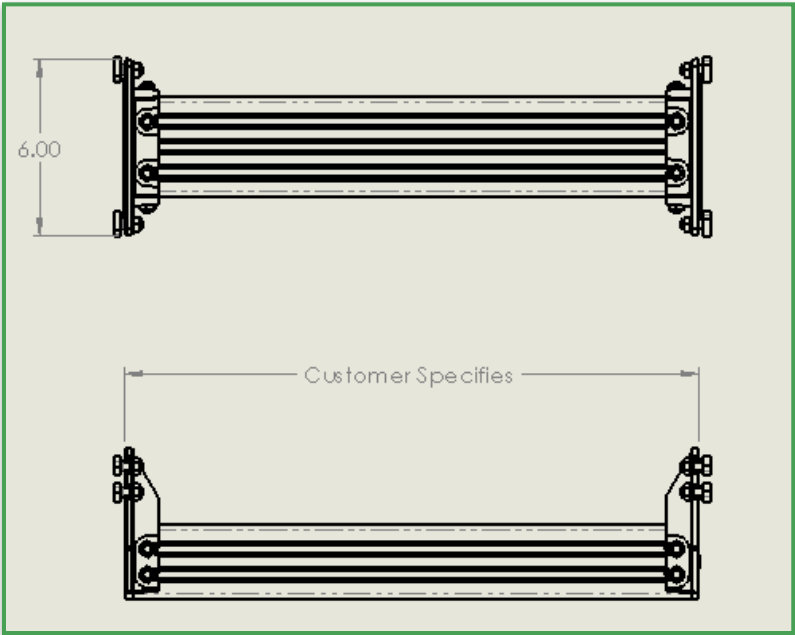
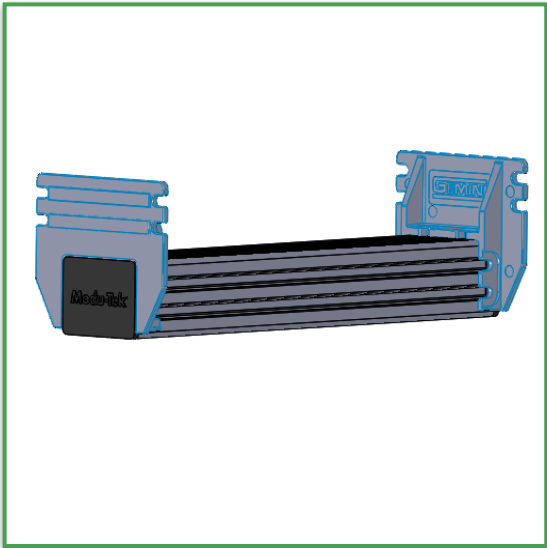
Cross-brace assembly

Typical Uses:

- Stop mount
- Conveyor braces

Features:

- T-slotted extrusions for easy adjustment
- Keyed side brackets to ensure proper alignment.



ITEM NO.	PART NUMBER	DESCRIPTION	QT Y.
1	B0800121	Cross Bar Bracket Assembly	2
2	E010050100	2x3 Extrusion – Length Based on Customers Dimension	1
3	H0400621	HARDWARE, END CAP, 2X3	2
4	H010011100	¾" t-Bolt Assembly	20



C9900511

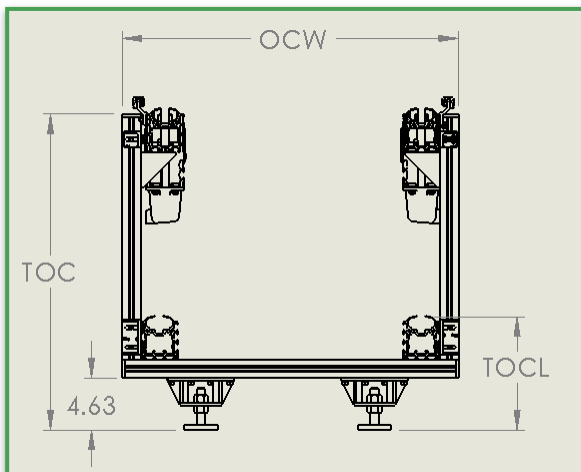
Over Under Support Assembly

Typical Uses:

- Conveyor Support for dual level lines

Features:

- Adjustable leveling feet
- T-slotted extrusions for adjustable cross braces.



OCW = Outside Conveyor Width

Minimum = 12"

Maximum = 48"

TOCL = Top of Chain Lower

TOCL = 9.5"

TOC = Top of Chain

Minimum = 20"

Maximum = 48"

*please specify when ordering



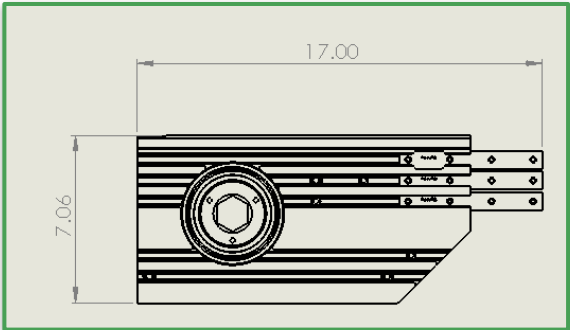
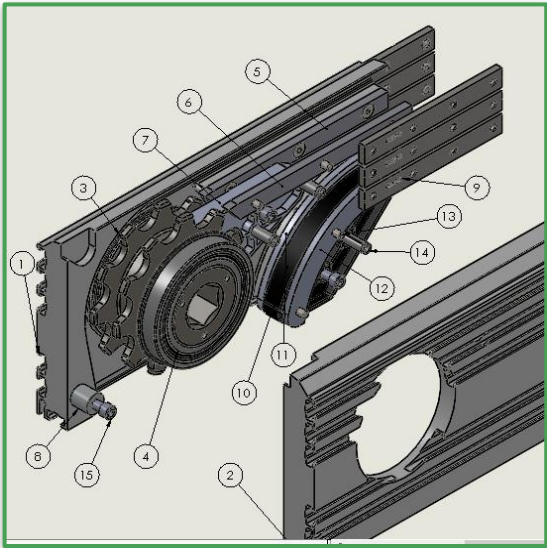
D01002110
2060 Idler Assembly

Typical Uses:

- Returns chain from lower level to upper rail.

Features:

- T-slots for modular assembly with T-Bolts, Joiner Strips, and Square Nuts.
- Sold in pairs



ITEM NO.	PART NUMBER	DESCRIPTION	QTY.
1	D017182104		1
2	D017192104	2060 Drive/Idler Side Plate - RH	2
3	D017050109	SPROCKET, DRIVE, GEMINI 2060, HEX BORE	1
4	60142RSNRJEM	BEARING, BALL, SINGLE ROW RADIAL, DOUBLE SHIELDS AND SNAP RING, 70MM ID X 110MM OD X 20MM WIDE	2
5	D0180201	2060 Drive/Idler Wear Strip - RH	1
6	D017320101	STRIPPER, DRIVE/IDLER, 2060 FLOW THROUGH	1
7	D017110100	DRIVE, IDLER SPACER, GEMINI 2060	1
8	D0180501R02	REFEED, DRIVE/IDLER, GEMINI 2060, LH	1
9	D0180601R02	REFEED, DRIVE/IDLER, GEMINI 2060, RH	2
10	D0180401	2060 Drive/Idler Wear Strip - LH	2
11	D017080101	CHAIN REFEED SPACER, GEMINI 2060	1
12	B060031100	JOINER STRIP, 4 HOLE	9
13	B060032100	JOINER STRIP, 4 HOLE	3



D010271100

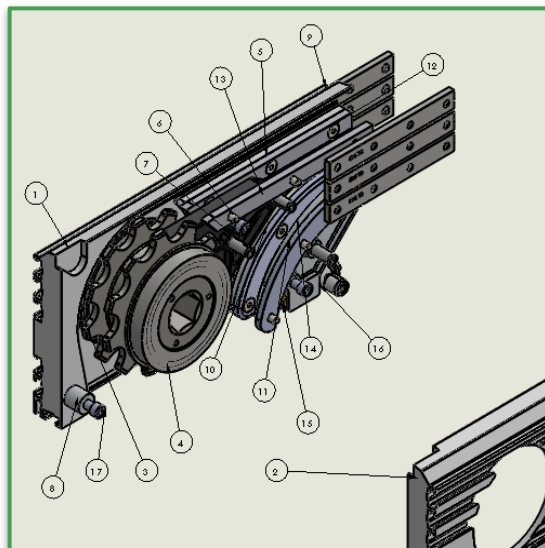
2060 Drive Assembly with Hex Bore and Blower

Typical Uses:

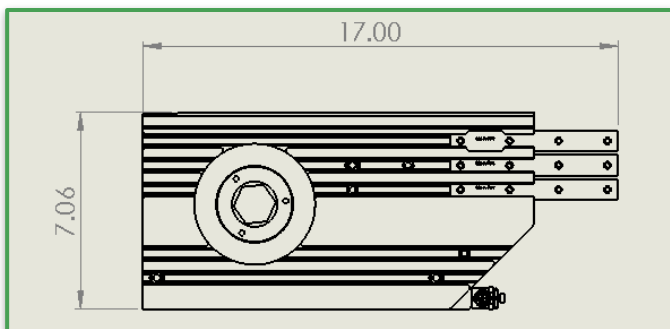
- Return chain from upper to lower level.
- End unit for motor mount

Features:

- T-slots for modular assembly with T-Bolts, Joiner Strips, and Square Nuts.
- 1 in 5/16 hex bore.
- Integrated high pressure blower to clean chain.
- Sold in pairs



ITEM NO.	PART NUMBER	DESCRIPTION	QTY.
1	D017182104		1
2	D017192104	2060 Drive/Idler Side Plate - RH	1
3	D017050109	SPROCKET, DRIVE, GEMINI 2060, HEX BORE	1
4	60142 RSNRJEM	BEARING WITH SNAP RING	2
5	D0180201	2060 Drive/Idler Wear Strip - RH	1
6	D0180401	2060 Drive/Idler Wear Strip - LH	1
7	D017100100	DRIVE CHAIN STRIPPER, GEMINI 2060	1
8	D017110100	DRIVE, IDLER SPACER, GEMINI 2060	1
9	B060031100	JOINER STRIP, 4 HOLE	6
10	D0180501R02	REFEED, DRIVE/IDLER, GEMINI 2060, LH	1
11	D0180601R02	REFEED, DRIVE/IDLER, GEMINI 2060, RH	1
12	25C62KFC	SCREW, 1/4-20UNC X 5/8" LG, FHCS	12
13	37R250PRP	PIN, SPRING, $\phi 3/8$ X 2-1/2" LG	3
14	HX-SHCS 0.3125- 18x1.75x1.75-N		3
15	31C31KKCS	Set Screw, 5/16-18 X 5/16" LG, Socket Cup Point	24
16	13X06C2000	CHAIN REFEED SPACER, GEMINI 2060	1
17	3404K75	FLAT SPRAY NOZZEL	1
18	AS2201F-U02-07		1



D0150311

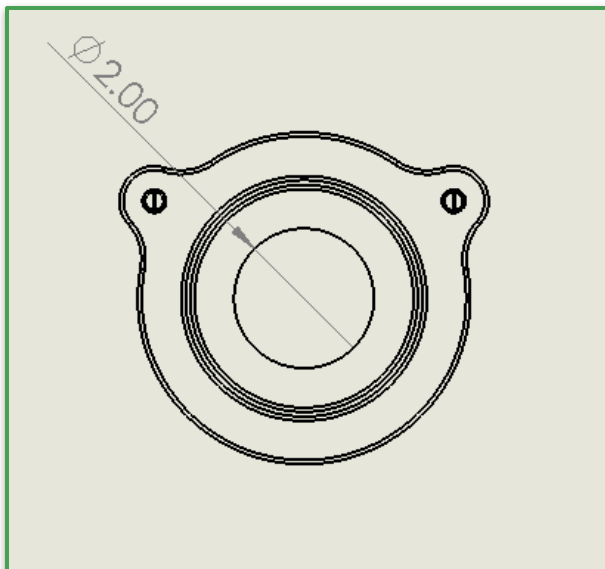
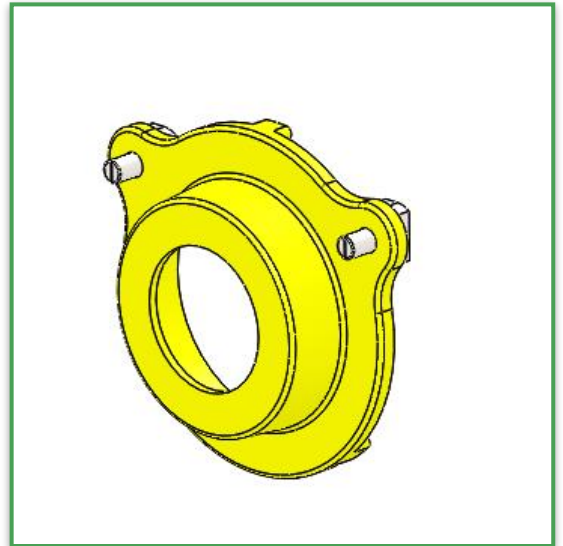
Inner Drive Shaft Guard

Typical Uses:

- Guarding drive shaft

Features:

- Keys to align with drive or idler
- 2 ½ " through hole for shaft



D0181101

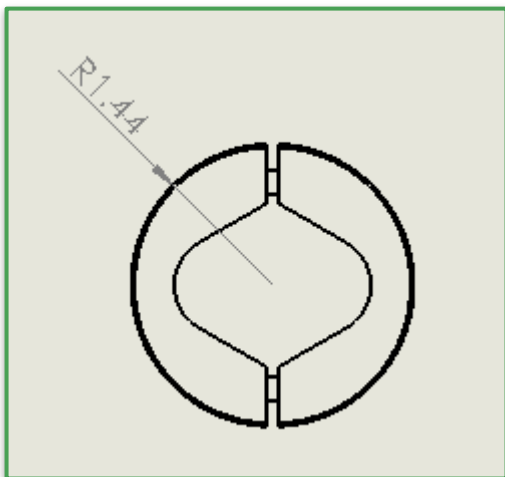
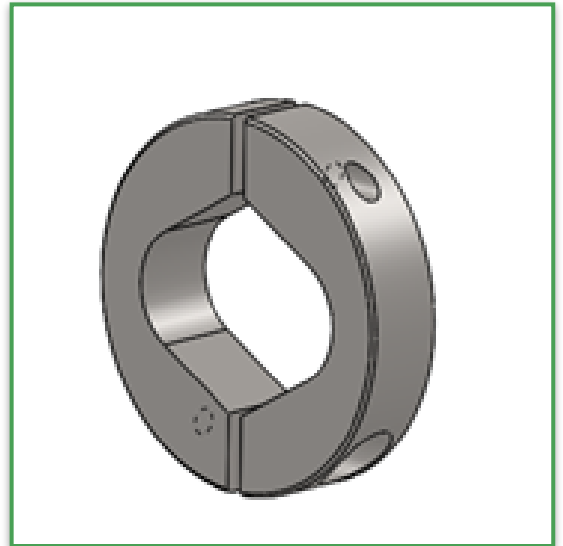
1 5/16 in Shaft Clamp

Typical Uses:

- Shaft clamp for drive shaft

Features:

- 2 locking screws for maximum clamping force





D0170321

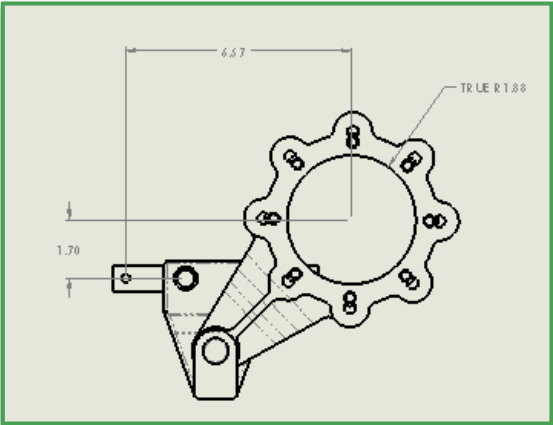
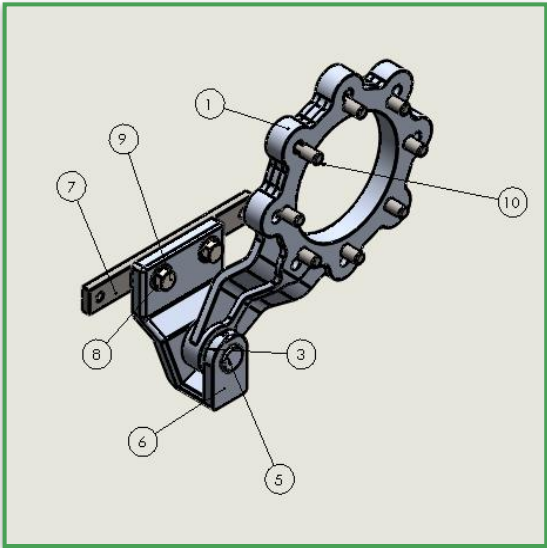
Nord Torque Arm Assembly

Typical Uses:

- Mount for the gear motor

Features:

- Quick removal of gear motors



ITEM NO.	PART NUMBER	DESCRIPTION	QTY.
1	D017032100	MOTOR MOUNT	1
2	RE-37	External Snap Ring 3/8"	1
3	559	Grommet - Atlantic India Rubber (Torque Arm)	1
4	SS-1220-12	Sleeve Bearing - 3/8" ID x 5/8" OD x .75" L	1
5	CPG-159-T	Clevis Pin - Grooved, 3/8" Dia x 1.75" L	1
6	D017012100	Torque Arm Bracket - 2060	1
7	B060032100	JOINER STRIP, 4 HOLE	1
8	68N34WSDZ/089	WASHER, FLAT, 5/16 .68 OD X .34 DID X .089 THK	2
9	31C75HCS	SCREW, 5/16-18UNC X 3/4" LG, HEX HEAD	2
10	.80C250KCS	SCREW, M8 X 1.25 X 25 LG, SHCS	8

D017932100

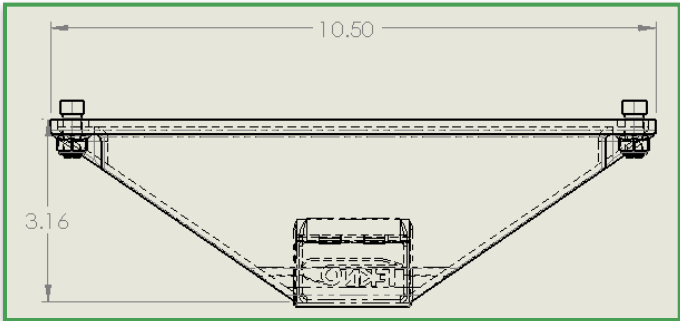
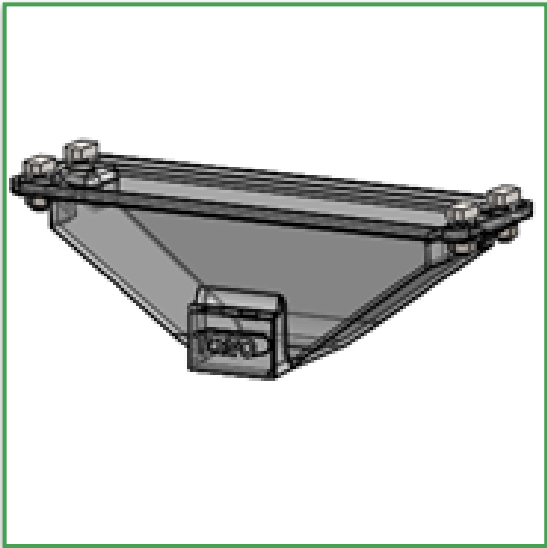
3" Catenary Guard Assembly

Typical Uses:

- Guard for chain on drives and idlers

Features:

- Has a door to quickly remove debris
- Clear for easy indication of debris



ITEM NO.	PART NUMBER	DESCRIPTION	QTY.
1	D017932100	CATENARY GUARD, 3" TALL, AUTO ESCAPEMENT	1
2	13X18C2500	AUTO-ESCAPEMENT CATENARY GUARD, HATCH	1
3	H0100121	HARDWARE, T-BOLT, 3/4"	4
4	31CNNEFW	LOCKNUT, 5/16-18NC FLANGED	4



D0180121

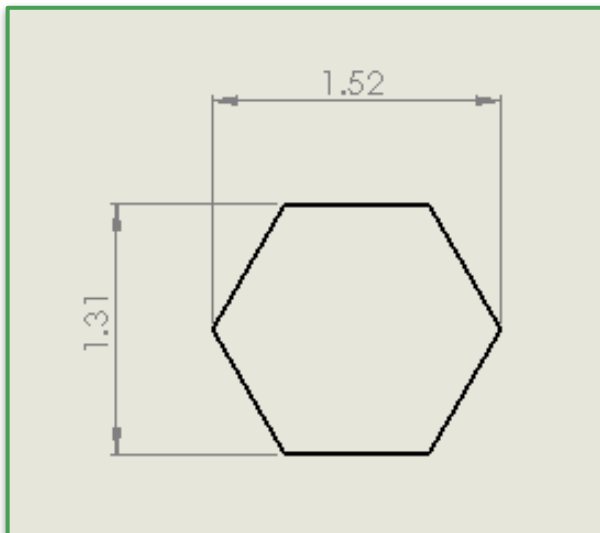
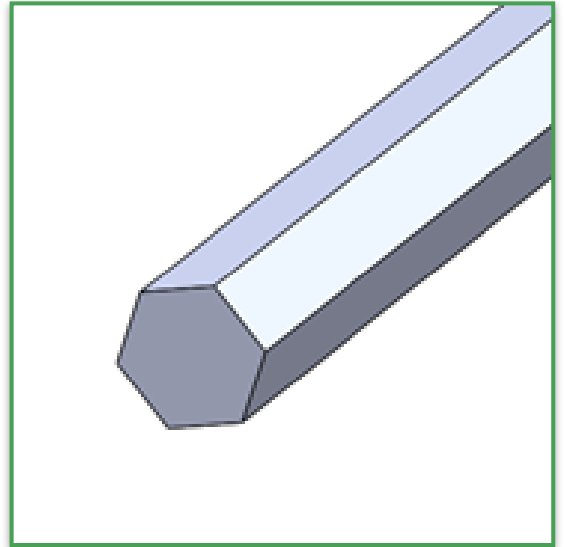
1 5/16" Hex Shaft

Typical Uses:

- Drive shaft for conveyors

Features:

- Stainless steel



D0180801

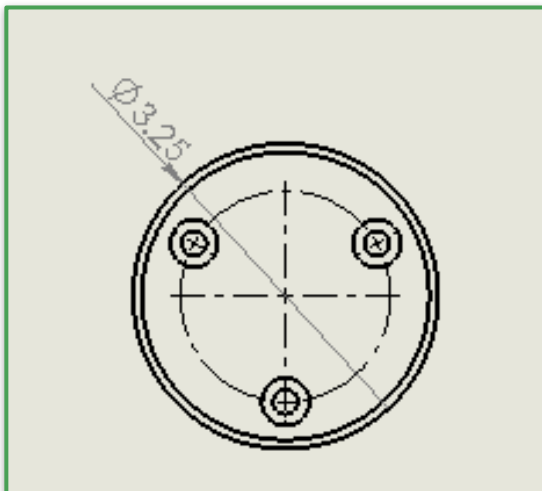
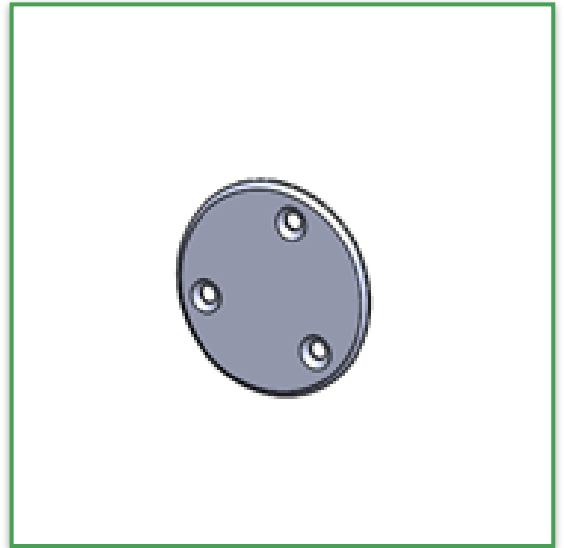
Sprocket Bore Cap

Typical Uses:

- Retainer for drive shafts.
- Cover for rotating sprocket on idler

Features:

- Zinc plated





E0100201R03

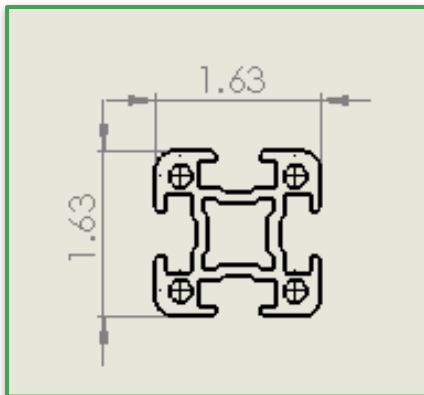
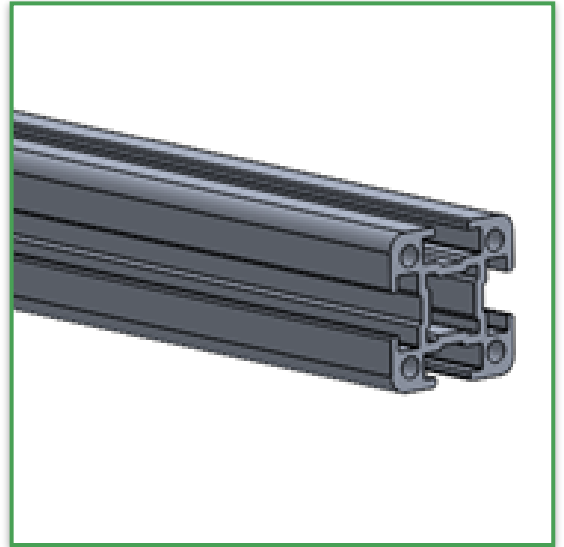
1x1 Extrusion

Typical Uses:

- Structural framework.
- Heavy duty/Outboard guide rail

Features:

- T-slots for modular assembly with T-Bolts, Joiner Strips, and Square Nuts
- Stock 20 ft lengths





E0100601

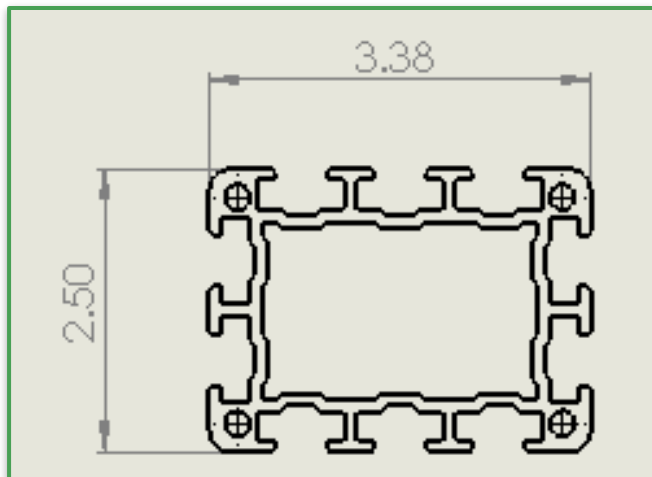
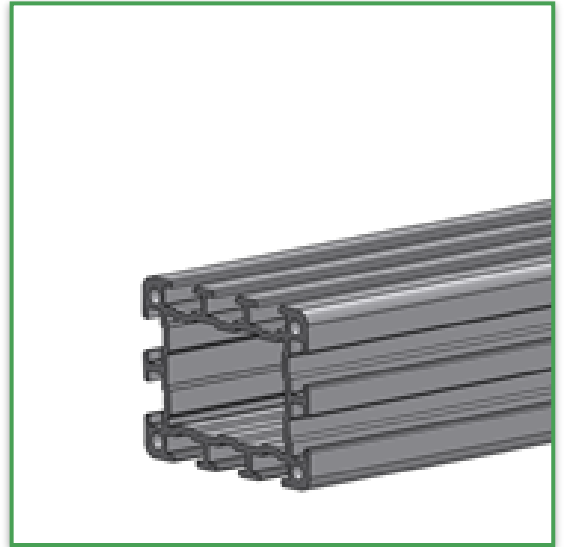
2x3 Slot Extrusion

Typical Uses:

- Structural framework.
- Cross supports.
- Door and safety screen frames.
- Cross braces for stops

Features:

- T-slots for modular assembly with T-Bolts, Joiner Strips, and Square Nuts





E030112100

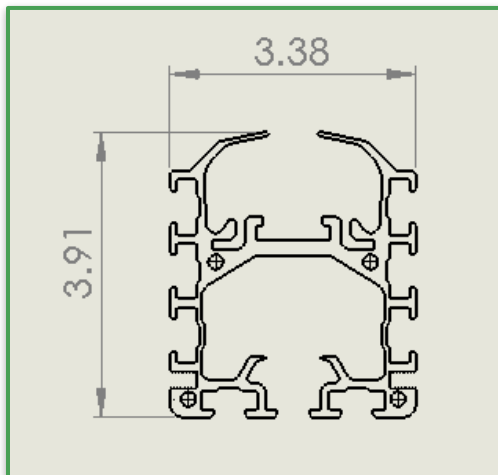
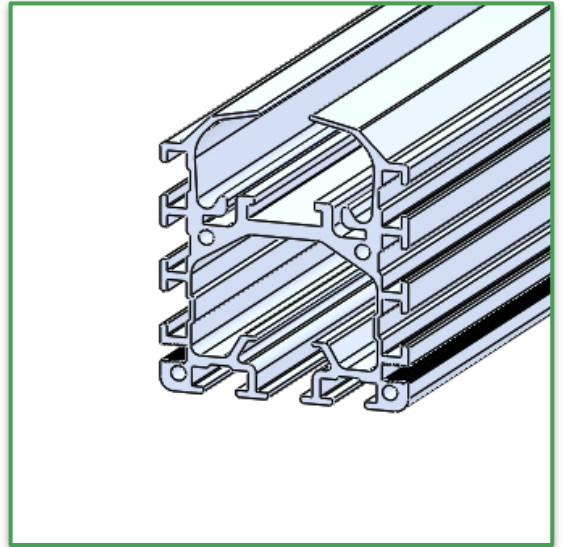
2060 Hybrid Conveyor Extrusion

Typical Uses:

- Conveyor framework for assembly lines, pallet handling, or other transportation

Features:

- T-slots for modular assembly with T-Bolts, Joiner Strips, and Square Nuts. Standard 20ft lengths.
- Open bottom to allow debris to fall out
- Reinforced top to prevent damage
- 1/4 "-20 threaded slot for panels and guarding





E0501521

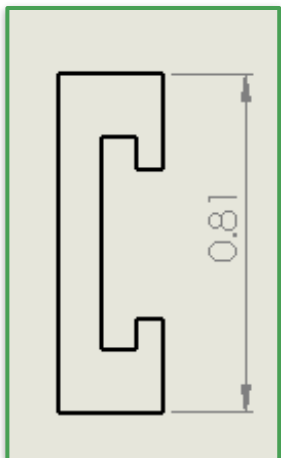
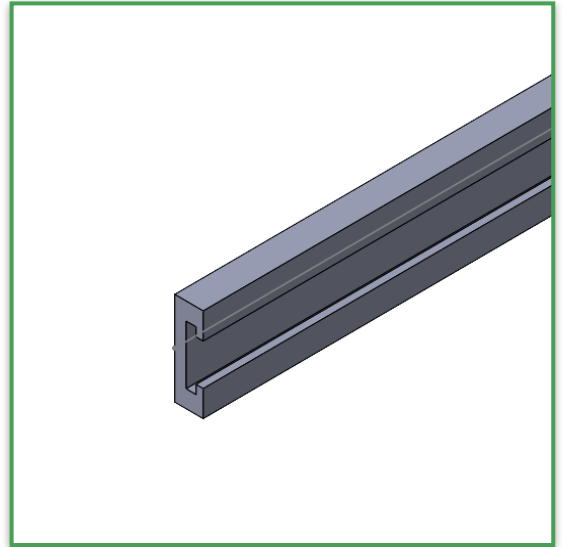
Snap on guide rail cover

Typical Uses:

- Low friction guide surface for pallets

Features:

- Comes in 20ft lengths



E0502021

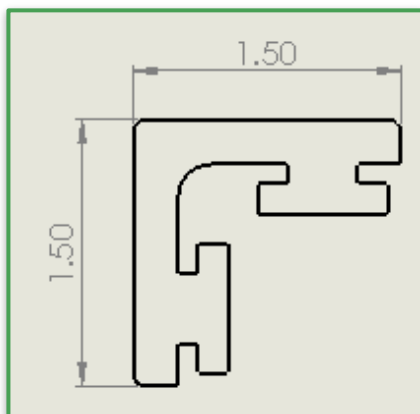
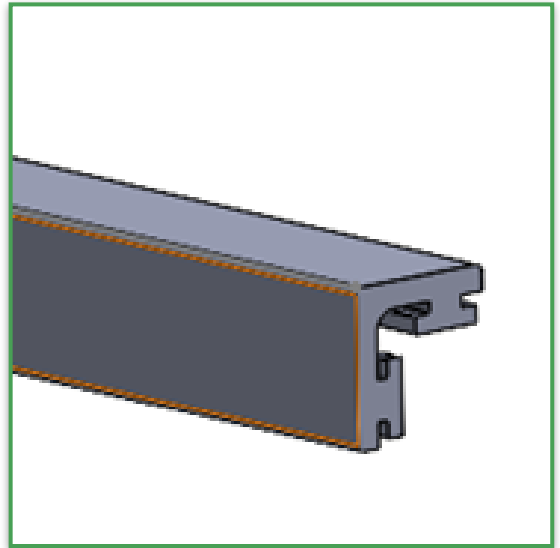
Corner UHMW Extrusion

Typical Uses:

- Low friction guide surface

Features:

- 20 ft lengths
- Fits on any T slot extrusion





E0800121

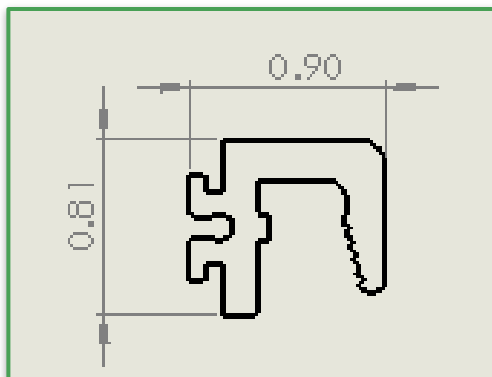
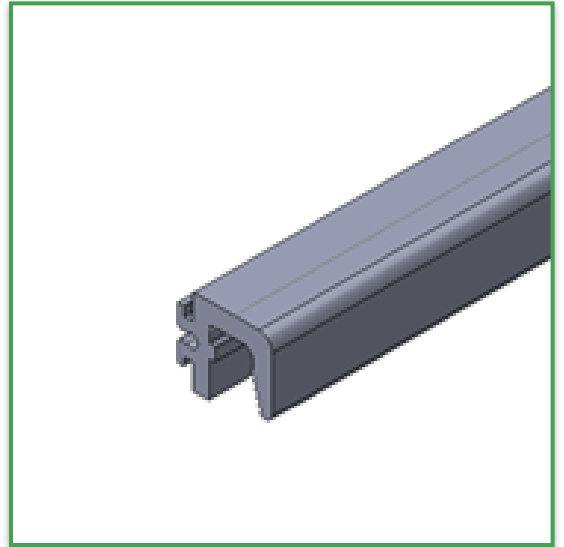
Snap on Guide Rail Extrusion

Typical Uses:

- Guide for pallets on 2060 conveyor

Features:

- Serrated retainer for wedges and key to fit in the guide rail brackets



H0100111

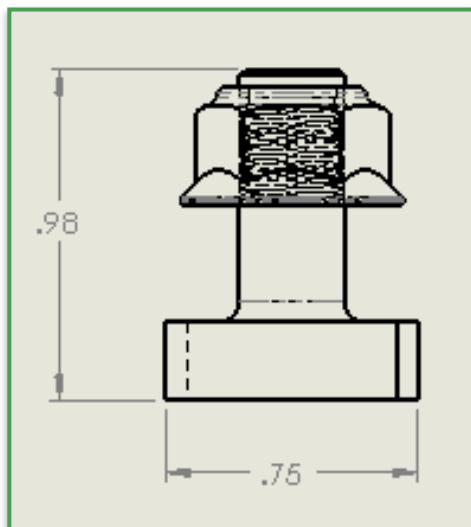
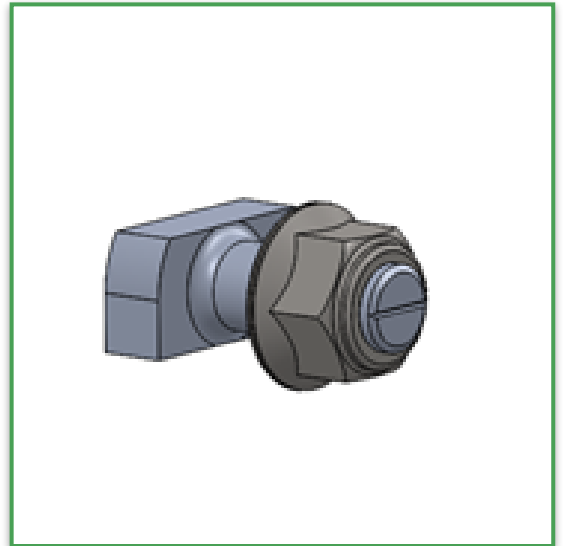
$\frac{3}{4}$ " T-Bolt Assembly

Typical Uses:

- Fastening brackets and other assemblies to T slot extrusions

Features:

- Preassembled nut and bolt to drop into brackets
- Nylock Nut
- Grade 8



H0400621

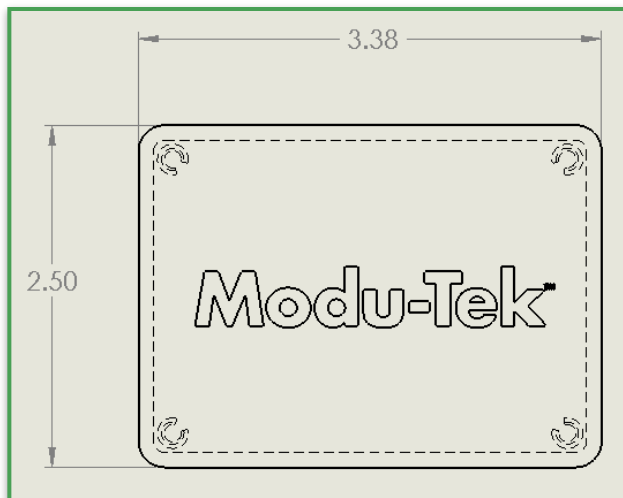
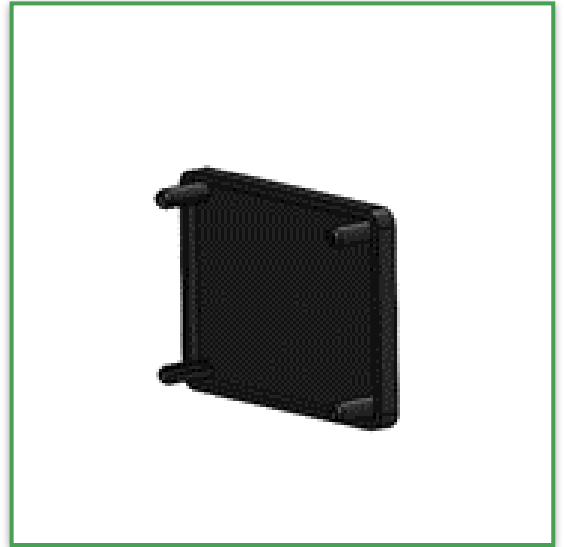
2X3 End Cap

Typical Uses:

- End cap for 2x3 beam

Features:

- Alignment pins to match extrusion



H0900121

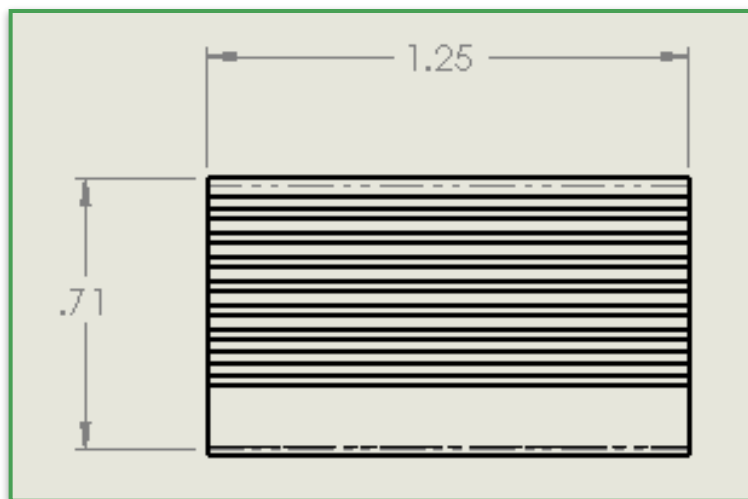
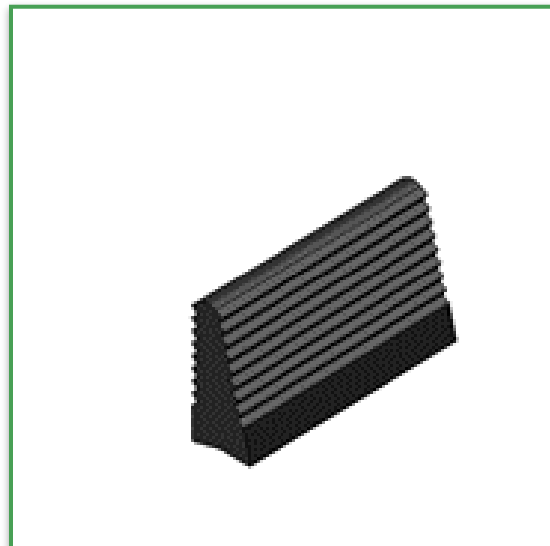
Snap On Guide Rail Clamp

Typical Uses:

- Clamp to hold guide rail on the bracket

Features:

- Serrated edge to lock in guide rail



H0900221

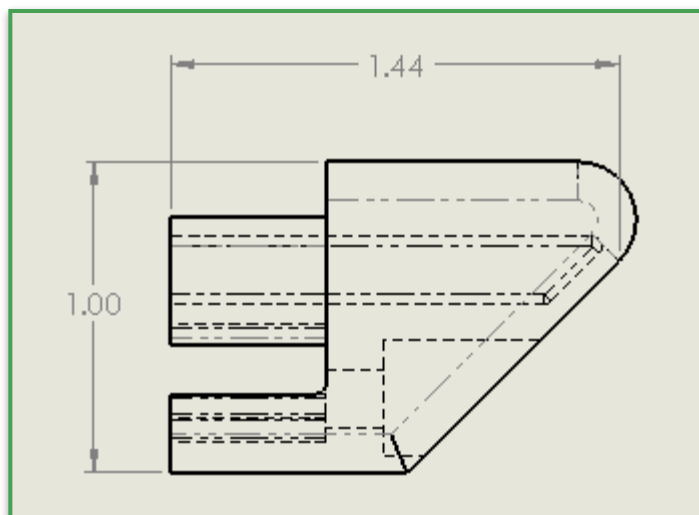
Snap on guide rail lead-in

Typical Uses:

- Lead in for snap on guide rail and retainer for guiderail wear strip

Features:

- Key to match snap on guide rail.





SK9016

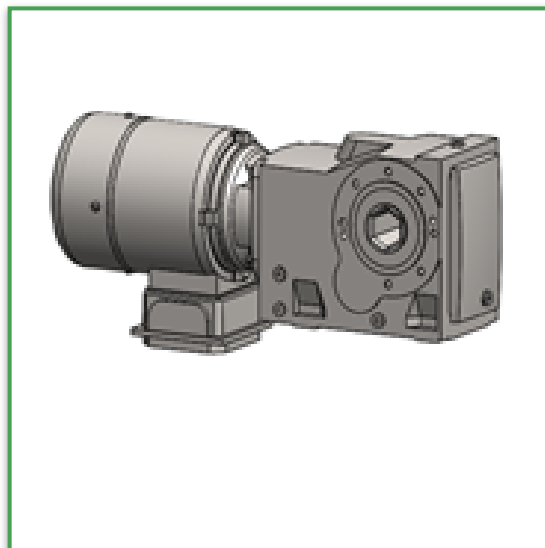
Nord Gear Motor Assembly

Typical Uses:

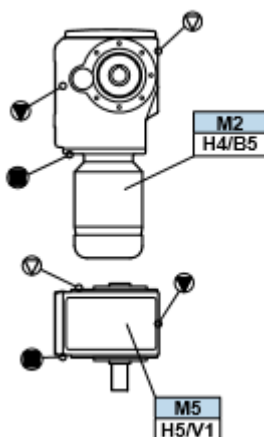
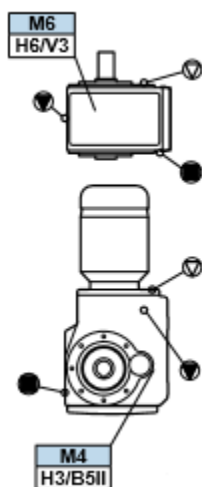
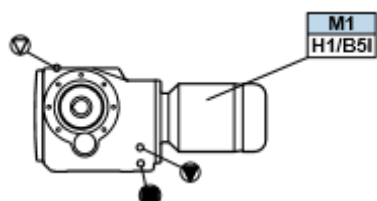
- Primary drive motor for conveyors

Features:

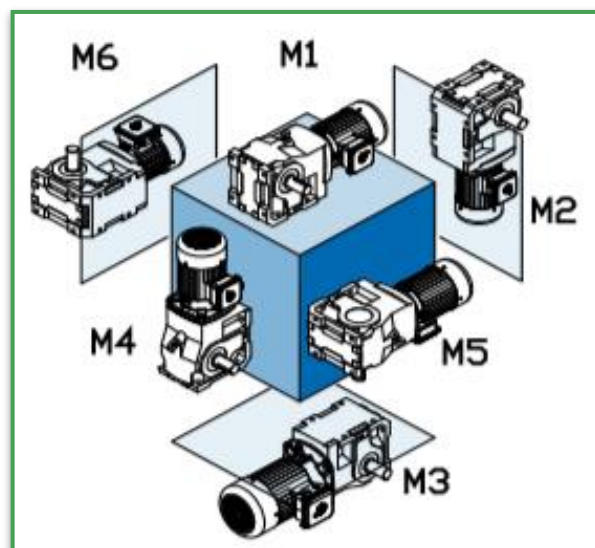
- 1 5/16" hex bore. Quick connect electrical



Oil Fill Levels



Motor Orientation





S010121100

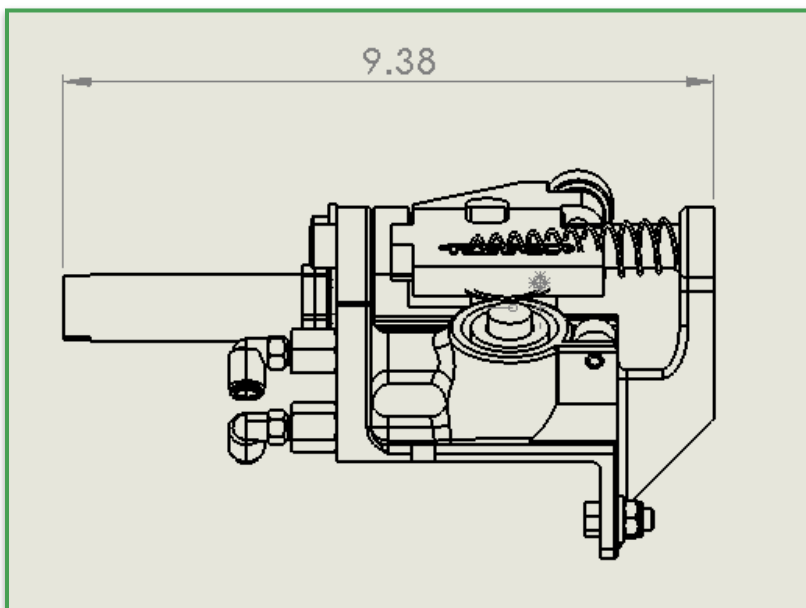
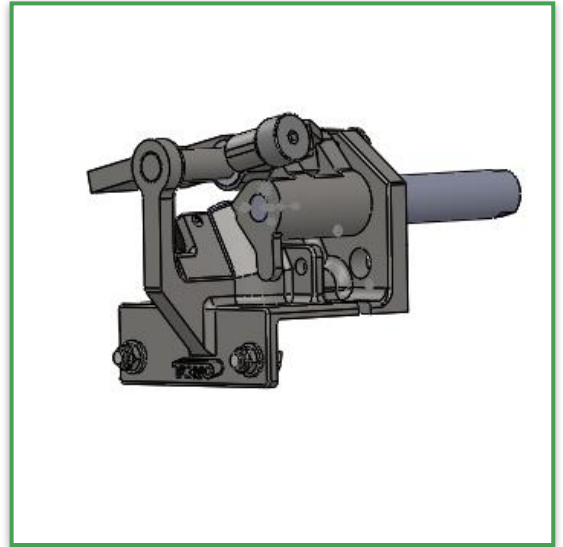
Queue paddle stop assembly

Typical Uses:

- Stopper for pallets where precision is not critical
- Queue stations where there are no operators working

Features:

- Gravity stopper paddle, allows for easy by-pass when needed
- Hardened steel roller for contact with the pallet
- 1 9/16" of travel for deceleration of pallet
- 5/16" Push-lock air fittings
- Spring loaded return for next cycle





S010131100

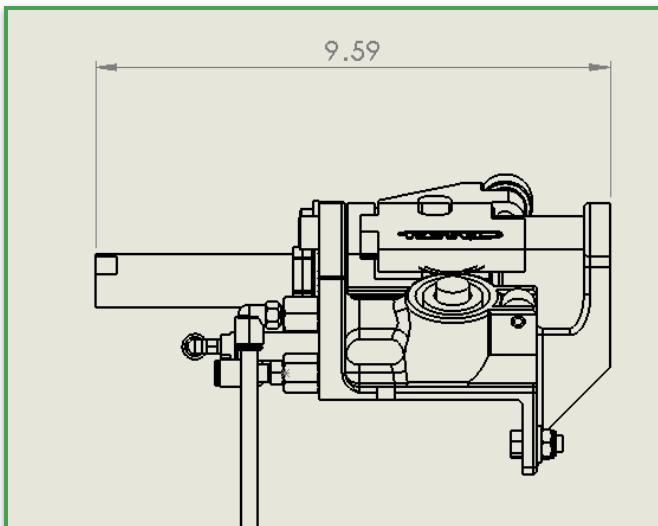
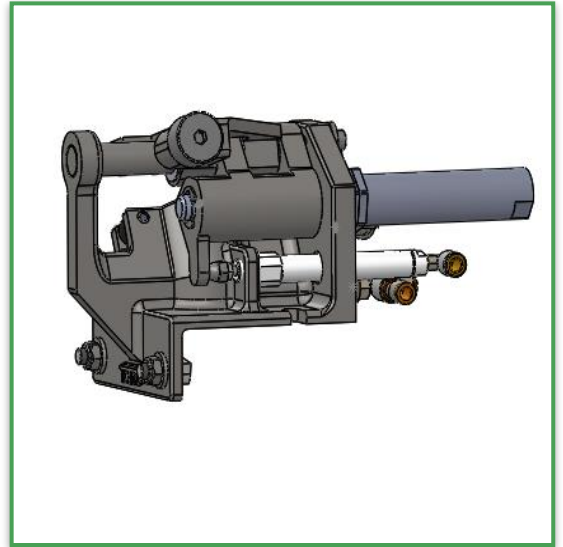
Locating paddle stop assembly

Typical Uses:

- Pallet stopper where location is critical. Locates pallet $\pm 0.06''$ in all directions
- Lift/Locate stations
- Lift/Transfer stations

Features:

- Gravity stopper paddle, allows for easy by-pass when needed
- Hardened steel roller for contact with the pallet
- 1 9/16" of travel for deceleration of pallet
- 5/16" Push-lock air fittings
- Air cylinder to return stop for next cycle



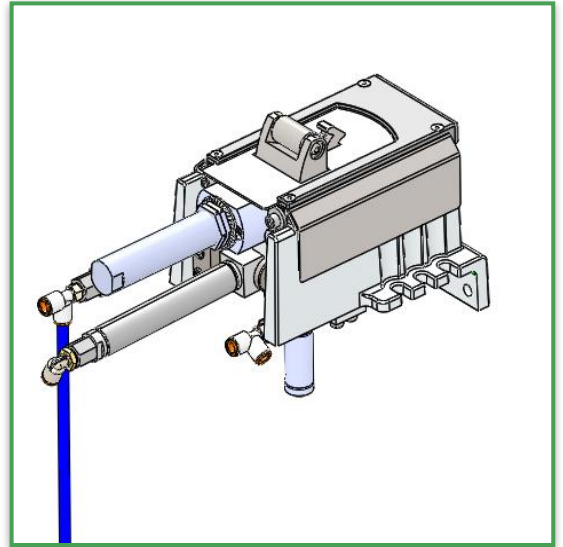


S100151101

Gen 3 lock down stop, 3 Cylinder

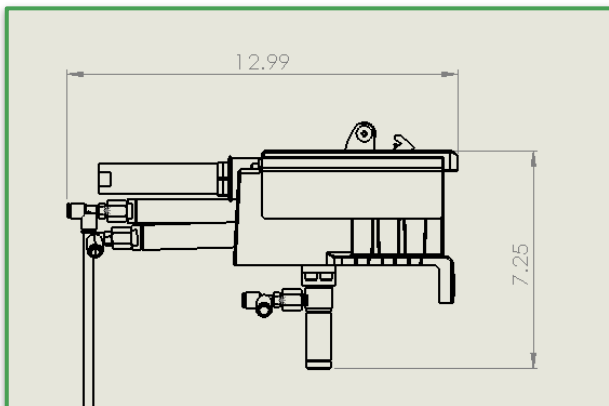
Typical Uses:

- Pallet stop for operator station where process is completion is critical
- Pallet weights above 50 lbs.
- 3 cylinder are used for operator workstations where the pallet shouldn't move when the operator pushes on it.
- Use for stations where pallet release is critical and control by PLC



Features:

- Hardened steel roller for contact with pallet
- Fully guarded to prevent foreign objects from jamming the mechanisms
- 5/16" Push-lock air fittings
- Stop dog cannot be defeated by operators, must be released with the air cylinder
- Anti-back up hook locks pallet in place
- Ratchet feature keeps stop from being pushed upstream by operator's work
- 1.5" deceleration





S100161101

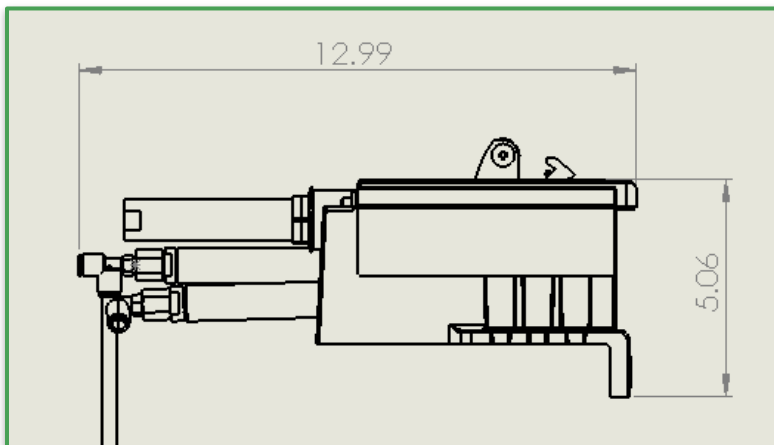
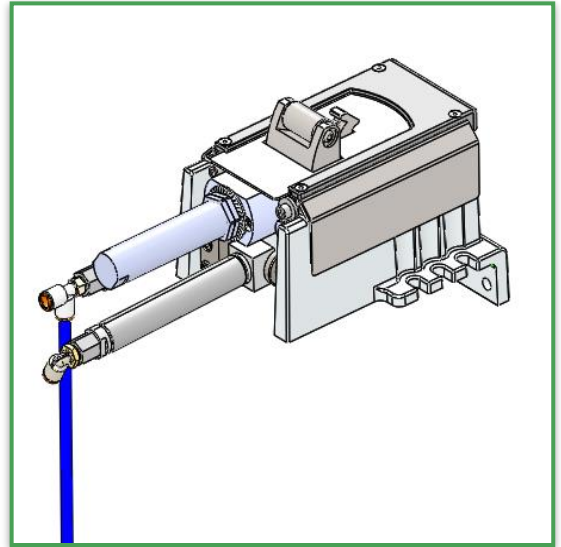
Gen 3 lock down stop, 2 cylinder

Typical Uses:

- Pallet stop for operator station where process completion is critical
- Pallet weights above 50 lbs.
- Use for stations where pallet release is critical and control by PLC

Features:

- Hardened steel roller for contact with pallet
- Fully guarded to prevent foreign objects from jamming the mechanisms
- 5/16" Push-lock air fittings
- Stop dog cannot be defeated by operators, must be released with the air cylinder
- Anti-back up hook locks pallet in place
- 1.5" deceleration





S100171101

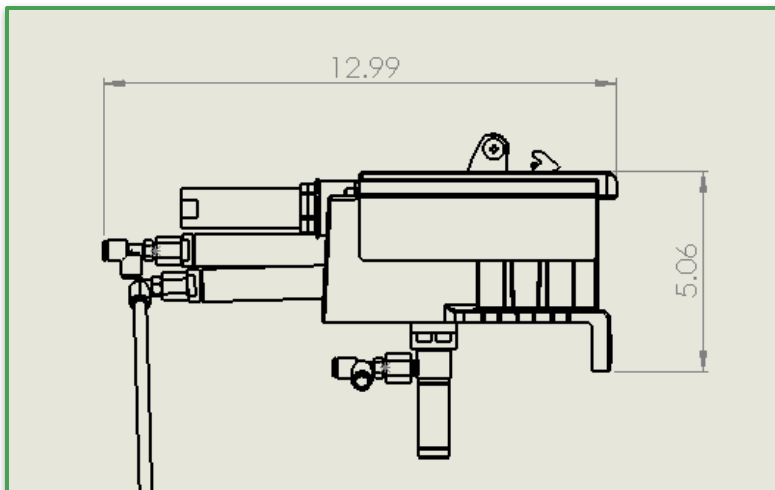
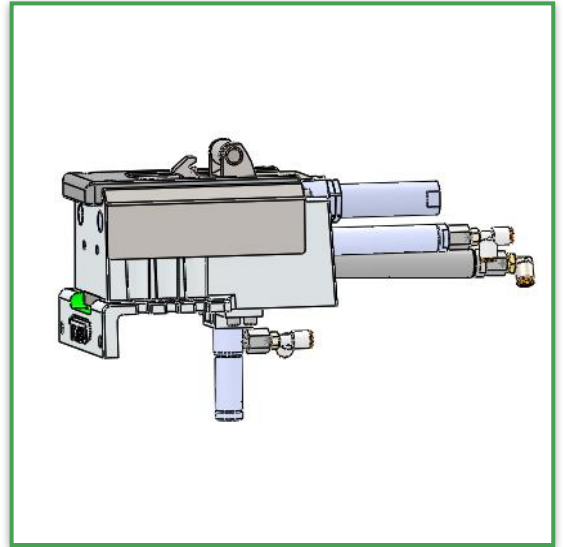
Gen 3 Lock Down Stop, 3 Cylinder, Low Load

Typical Uses:

- Pallet stop for operator station where process is completion is critical
- Pallet weights of 50 lbs or less

Features:

- Hardened steel roller for contact with pallet
- Fully guarded to prevent foreign objects from jamming the mechanisms
- 5/16" Push-lock air fittings
- Stop dog cannot be defeated by operators, must be released with the air cylinder
- Anti-back up hook locks pallet in place
- 1.5" deceleration





S100181101

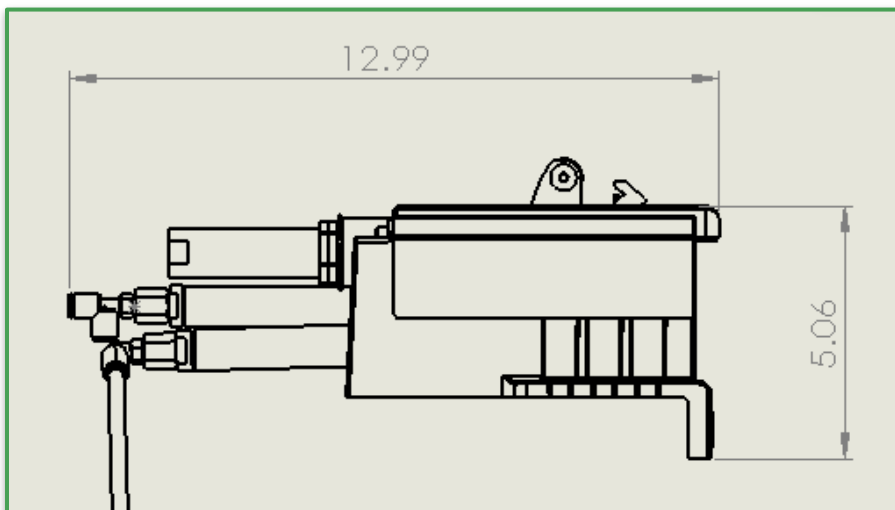
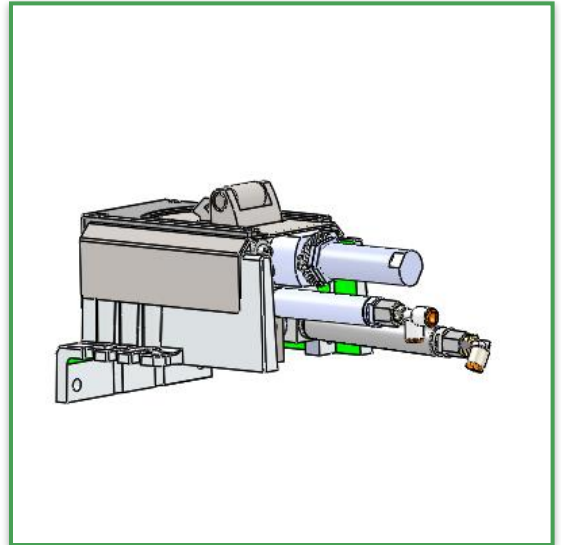
Gen 3 Lock Down Stop, 2 Cylinder, Low Load

Typical Uses:

- Pallet stop for operator station where process is completion is critical
- Pallet weights of 50 lbs or less

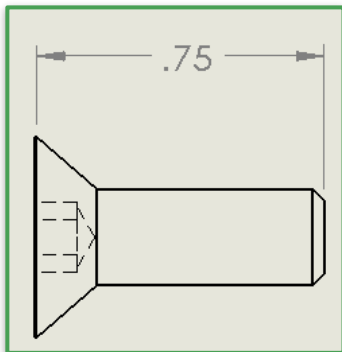
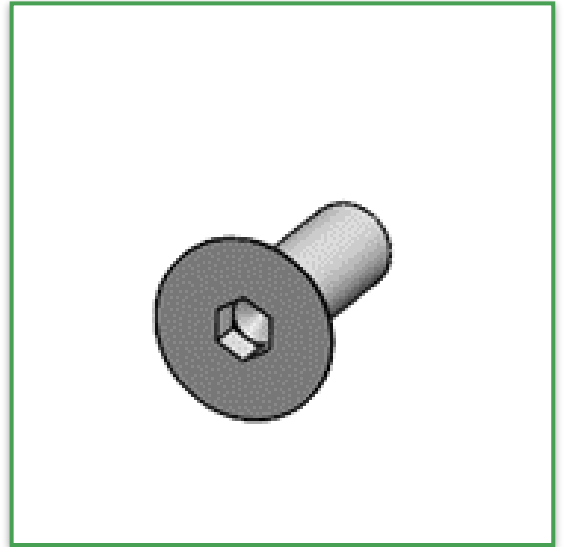
Features:

- Hardened steel roller for contact with pallet
- Fully guarded to prevent foreign objects from jamming the mechanisms
- 5/16" Push-lock air fittings
- Stop dog cannot be defeated by operators, must be released with the air cylinder
- Anti-back up hook locks pallet in place
- 1.5" deceleration



**25c75kfc****¼" – 20 x ¾ Flathead cap screw****Typical Uses:**

- Fastener for sprocket bore caps

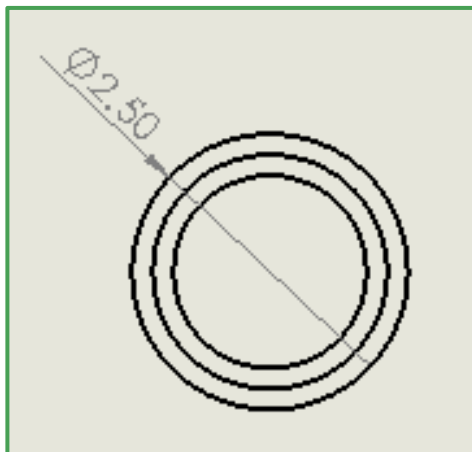
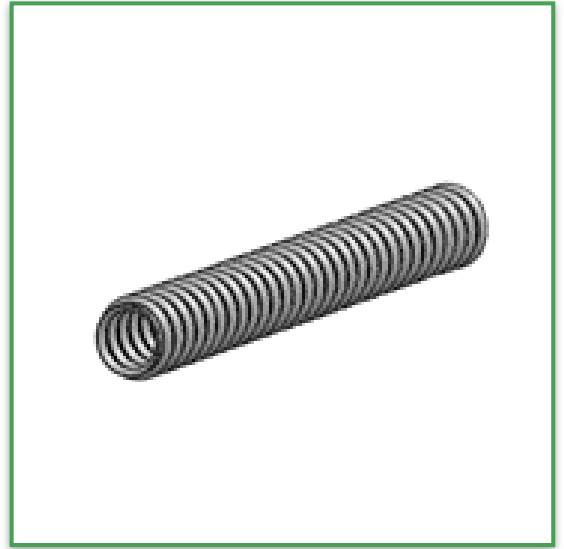




1F-058-04 Drive Shaft Guard

Typical Uses:

- Cover for 1 5/16" drive shaft





8SQ100SS2

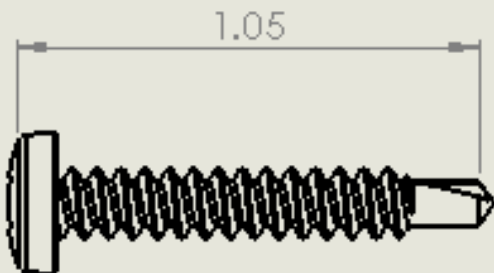
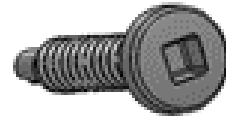
#8 x 1.00" lg. Self tapping screw

Typical Uses:

- Fastener for snap on guide rail lead ins

Features:

- Self threading bolt. #2 Square drive.



Systems Integration

Tekno provides systems integration services to clients for projects large and small. With over 25 years of experience in mainstream industry, both domestically and internationally, we have the proven know-how, expertise, and product familiarity to make your automated production systems a success. With internal design, assembly, machining, control panel configuration, and programming capabilities, Tekno offers a breadth and depth of services worthy of the world's finest manufacturing facilities.

Tekno Conveyor Systems



Tekno is an Original Equipment Designer and Manufacturer of a world class line of modular conveyor components. Tekno conveyors can handle a wide variety of product and carrier types, loads, sizes, and conveyance speeds. Tekno conveyors are extremely flexible in application, and they're re-configurable when production requirements change. Thousands of automated conveyance, assembly, and processing systems built from the well-established product lines have been fielded across North America and beyond.

Use Tekno's own Non-synchronous Conveyor System for Palletized Product Assembly & Conveyance:



Tekno Offers Turn-Key Manufacturing & Material Handling Systems Integration Services.



12-2 ADDITIONAL PRODUCTS & SERVICES

Stair Tread and Walkovers

Tekno's product line also allows you to design and build completely modular stair treads and walkovers for your application. Built of the highest quality extruded anodized aluminum, these structures provide lightweight, yet ultra sturdy platforms and staircases. Our tread plate material is designed with a premium on safety; our tread plates provide raised traction features. We also offer vented tread plate that allows dirt and other debris which accumulates to fall freely through the plate, virtually eliminating the risk of slippage. As is the case with any Tekno product, these structures possess incredible versatility and are easily configured/reconfigured for any Application. Call us today for further information on our Walkovers and Stair Treads!





12-3 ADDITIONAL PRODUCTS & SERVICES

Custom Product Pallets

Tekno can design and build product carriers of almost any size, shape, and composition, to very close tolerances.

Tekno's in-house fabrication, machining and assembly capability can provide special fixtures, pallet electrification equipment, multiple-model corner and product support blocks, pallet-to-station locking methods, status flag, in-line product burn-in and testing features, corner rollers, UHMW-PE glide edging, stopper cutouts, and raised aluminum pedestals. Send your custom applications our way.

Check Out Tekno's Own Internal Custom Pallet Design, Fabrication, and Build Capabilities:



Special Machinery:

- Tekno's engineering, machining, fabrication, assembly, and documentation departments provide a wealth of capabilities in the creation and application of custom machinery.
- With specialists in conveyance, part fixturing, material flow, heat treatment, furnaces and ovens, vertical product lifts, brazing technology, manufacturing processes, in-line gauging, product inspection and testing, automation programming and robotic Applications.
- Tekno can handle many types of special equipment projects.
- Special machinery is pre-built in our facility, then tested, de-bugged, and run off for the customer prior to shipment and installation of the equipment. To help your operators and maintenance technicians better understand and care for your new machinery.
- Tekno also offers various levels of custom documentation and training packages.



Tekno's Skilled Engineers & Technicians Can Design, Fabricate, Build, and Install Equipment to Meet Your Needs: